

Medium Booths On-Boarding Spreadsheet

Step 1

Search Your Virtual Booth by number.

Step 2

Provide the desired content for each area following the content dimensions specified in your booth number.

For medium booths you have:

- 3 to 4 branding spaces in the walls (That you cannot link content to)
- 12 to 13 content spaces in the walls (That you can link content to)
- Up to 10 extra content between downloads and products (these 2 tabs are in the Burger menu)
- Up to 10 extra business cards/forms (Contacts tab in the Burger menu), the booth has 4 default contact forms, those 4 doesn't count towards your 10 business cards/forms.

*You can distribute your content (videos, links, documents, images, etc.) as you like

**The images for the content spaces in the walls have to be the exact pixel size of the posters/T-Vs/banners within your booth number, in JPG/JPEG format. The linked content can be any size.

***The image on the wall can be used as preview in the slider as well, or it can be a different image, and every content space on the wall can be linked to only one content (image, video, link, audio, document, etc.)

Types of Content:

- Images: JPG/JPEG, PNG, GIF
- Videos: MP4
- Documents: PDF, DOCX, PPTX, XLS
- Links: Websites, Webinars, Forms, etc.
- Audio: MP3
- Other downloads or packs: ZIP, RAR

Additionally, you can send:

- Email address of whom attendee questions should be sent to
- Email address of users that should be allowed to see the analytics of the booth.
- Freebies (if any. Attendees can have mailed to them. Include images/description, and email where to send the submittal)
- Raffles (if any. Include images/description, and email where to send the submittal)

Medium booths have 4 content refreshes per year. You can buy extra.

Step 3

Submit your content and the form "Content Arrangement" to the Dropbox folder that will be emailed to you by Simulocity.

Medium- 0001



Branding Square 1 (1000 x 1000 px)

Step 1: Select your virtual booth.

Step 2: Provide the desired content for each area following the dimensions specified below. You can choose to put any content in the interactive places such as: images, audio, videos, links, documents, etc.

Step 3: Submit your content and form to the dropbox folder that will be emailed to you by Simulocity.

***Branding cannot be linked to content.**

****The images for the content spaces in the walls have to be the exact pixel size of the posters/TVs/banners within your booth number, in JPG/JPEG format. The linked content can be any size.**



Poster L1 (1600 x 1200 px)
TVL1 (1920 x 1080 px)
Poster L2 (1600 x 1200 px)

Banner P1 (1150 x 3000 px)
TVL1 (1920 x 1080 px)
Poster P1 (1200 x 1600 px)

Poster P1 (1200 x 1600 px)
Poster P2 (1200 x 1600 px)
Banner P1 (1150 x 3000 px)
Branding Banner L1 (3000 x 1150 px)
TVL1 (1920 x 1080 px)

Banner P1 (1150 x 3000 px)
Poster P1 (1200 x 1600 px)
Poster P2 (1200 x 1600 px)

Medium- 0002



Branding Poster L1 (1600 x 1200 px)
Branding Poster L2 (1600 x 1200 px)

Step 1: Select your virtual booth.

Step 2: Provide the desired content for each area following the dimensions specified below. You can choose to put any content in the interactive places such as: images, audio, videos, links, documents, etc.

Step 3: Submit your content and form to the dropbox folder that will be emailed to you by Simulocity.

***Branding cannot be linked to content.**

****The images for the content spaces in the walls have to be the exact pixel size of the posters/TVs/banners within your booth number, in JPG/JPEG format. The linked content can be any size.**



Poster P1 (1200 x 1600 px)
TVL1 (1920 x 1080 px)
Poster L1 (1600 x 1200 px)
Poster P2 (1200 x 1600 px)

Banner P1 (1150 x 3000 px)
Poster L1 (1600 x 1200 px)
Poster L2 (1600 x 1200 px)
Banner P2 (1150 x 3000 px)

Branding Banner L1 (1150 x 3000 px)
Poster P1 (1200 x 1600 px)
TVL1 (1920 x 1080 px)
Poster P2 (1200 x 1600 px)

TVL1 (1920 x 1080 px)
Banner P1 (1150 x 3000 px)

Medium- 0003



Step 1: Select your virtual booth.

Step 2: Provide the desired content for each area following the dimensions specified below. You can choose to put any content in the interactive places such as: images, audio, videos, links, documents, etc.

Step 3: Submit your content and form to the dropbox folder that will be emailed to you by Simulocity.

***Branding cannot be linked to content.**

****The images for the content spaces in the walls have to be the exact pixel size of the posters/TVs/banners within your booth number, in JPG/JPEG format. The linked content can be any size.**

Branding Banner L2 (3000 x 1500 px)
Square2 (1000 x 1000 px)



Banner P1 (1150 x 3000 px)
Banner P2 (1150 x 3000 px)
Branding Square 1 (1000 x 1000 px)

Poster P1 (1200 x 1600 px)
TVL1 (1920 x 1080 px)
Branding Banner L1 (3000 x 1150 px)

Poster P1 (1200 x 1600 px)
Banner P1 (1150 x 3000 px)
Poster L1 (1600 x 1200 px)
TVL1 (1920 x 1080 px)
Poster L2 (1600 x 1200 px)

TVL1 (1920 x 1080 px)
Poster P1 (1200 x 1600 px)
Poster L2 (1600 x 1200 px)
Poster P2 (1200 x 1600 px)

Medium- 0004



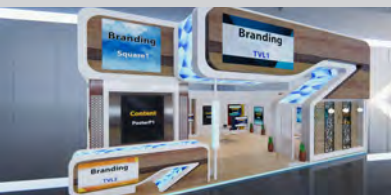
Step 1: Select your virtual booth.

Step 2: Provide the desired content for each area following the dimensions specified below. You can choose to put any content in the interactive places such as: images, audio, videos, links, documents, etc.

Step 3: Submit your content and form to the dropbox folder that will be emailed to you by Simulocity.

***Branding cannot be linked to content.**

****The images for the content spaces in the walls have to be the exact pixel size of the posters/TVs/banners within your booth number, in JPG/JPEG format. The linked content can be any size.**



Branding Square1(1000 x 1000px)
Branding TVL1 (1920 x 1080 px)
Poster P1 (1200 x 1600 px)
Branding TVL2 (1920 x 1080 px)

Banner P1 (1150 x 3000 px)
TVL1 (1920 x 1080 px)
Branding Square 2 (1000 x 1000 px)
Banner P2 (1150 x 3000 px)
Poster L1 (1600 x 1200 px)
Poster L2 (1200 x 1600 px)

Poster P1 (1200 x 1600 px)
Poster L1 (1600 x 1200 px)
Poster L2 (1600 x 1200 px)
TVP1 (1080 x 1920 px)

Poster P1 (1200 x 1600 px)
TVL1 (1920 x 1080 px)
Poster P2 (1200 x 1600 px)

Medium- 0005



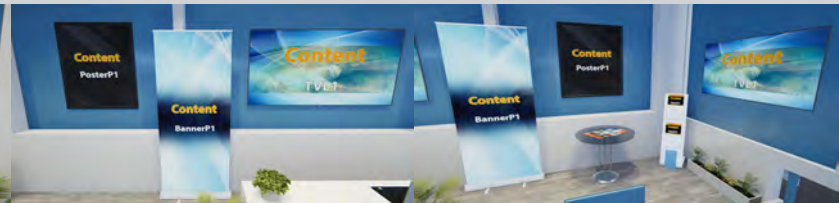
Branding TVL1 (1920 x 1080 px)
 Branding Banner L1(3000 x 1150 px)
 Branding Banner L2 (3000 x 1150 px)



Poster P2 (1200 x 1600 px)
 Poster L1 (1600 x 1200 px)



TVL1 (1920 x 1080 px)
 Poster P1 (1200 x 1600 px)
 Poster P2 (1200 x 1600 px)



Poster P1 (1200 x 1600 px)
 Banner P1 (1150 x 3000 px)
 TVL1 (1920 x 1080 px)

Banner P1 (1150 x 3000 px)
 Poster P1 (1200 x 1600 px)
 TVL1 (1920 x 1080 px)

Step 1: Select your virtual booth.

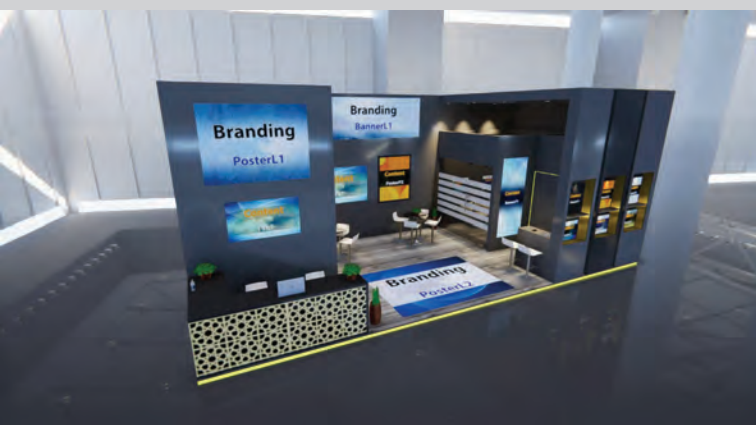
Step 2: Provide the desired content for each area following the dimensions specified below. You can choose to put any content in the interactive places such as: images, audio, videos, links, documents, etc.

Step 3: Submit your content and form to the dropbox folder that will be emailed to you by Simulocity.

***Branding cannot be linked to content.**

****The images for the content spaces in the walls have to be the exact pixel size of the posters/TVs/banners within your booth number, in JPG/JPEG format. The linked content can be any size.**

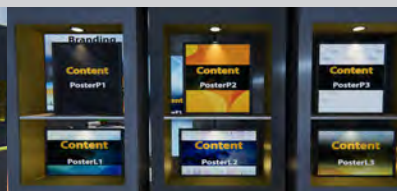
Medium- 0006



Branding Poster L1 (1600 x 1200 px)
 Branding Poster L2 (1600 x 1200 px)



TVL1 (1920 x 1080 px)



Poster P1 (1200 x 1600 px)
 Poster P2 (1200 x 1600 px)
 Poster P3 (1200 x 1600 px)
 Poster L1 (1600 x 1200 px)
 Poster L2 (1600 x 1200 px)
 Poster L3 (1600 x 1200 px)

Step 1: Select your virtual booth.

Step 2: Provide the desired content for each area following the dimensions specified below. You can choose to put any content in the interactive places such as: images, audio, videos, links, documents, etc.

Step 3: Submit your content and form to the dropbox folder that will be emailed to you by Simulocity.

***Branding cannot be linked to content.**

****The images for the content spaces in the walls have to be the exact pixel size of the posters/TVs/banners within your booth number, in JPG/JPEG format. The linked content can be any size.**

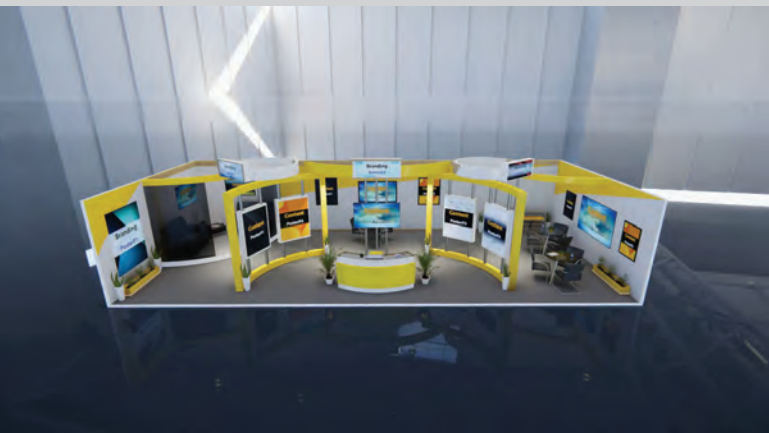


Branding Banner L1 (3000 x 1150 px)
 Poster P1 (1200 x 1600 px)
 TVL1 (1920 x 1080 px)
 Poster P2 (1200 x 1600 px)



Poster L1 (1600 x 1200 px)
 Poster L2 (1600 x 1200 px)
 TVL1 (1920 x 1080 px)

Medium- 0007



Step 1: Select your virtual booth.

Step 2: Provide the desired content for each area following the dimensions specified below. You can choose to put any content in the interactive places such as: images, audio, videos, links, documents, etc.

Step 3: Submit your content and form to the dropbox folder that will be emailed to you by Simulocity.

***Branding cannot be linked to content.**

****The images for the content spaces in the walls have to be the exact pixel size of the posters/TVs/banners within your booth number, in JPG/JPEG format. The linked content can be any size.**

Branding Poster P1 (1200 x 1600 px) Branding Banner L3 (3000 x 1150 px)
 Branding Banner L1 (3000 x 1150 px)
 Branding Banner L2 (3000 x 1150 px)



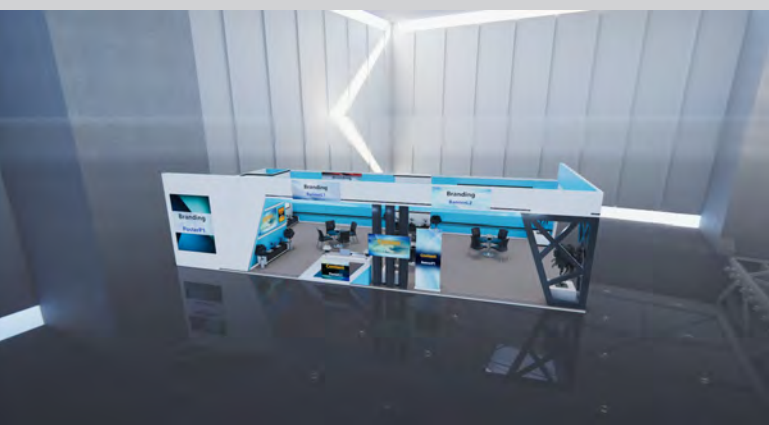
Poster P1 (1200 x 1600 px)
 Poster P2 (1200 x 1600 px)
 TVL1 (1920 x 1080 px)
 Poster P3 (1200 x 1600 px)
 Poster P4 (1200 x 1600 px)

Poster P1 (1200 x 1600 px)
 TVL1 (1920 x 1080 px)
 Poster P2 (1200 x 1600 px)

Poster P1 (1200 x 1600 px)
 TVL1 (1920 x 1080 px)
 Poster P2 (1200 x 1600 px)

TVL1 (1920 x 1080 px)
 TVL2 (1920 x 1080 px)

Medium- 0008



Step 1: Select your virtual booth.

Step 2: Provide the desired content for each area following the dimensions specified below. You can choose to put any content in the interactive places such as: images, audio, videos, links, documents, etc.

Step 3: Submit your content and form to the dropbox folder that will be emailed to you by Simulocity.

***Branding cannot be linked to content.**

****The images for the content spaces in the walls have to be the exact pixel size of the posters/TVs/banners within your booth number, in JPG/JPEG format. The linked content can be any size.**

Branding Poster P1 (1200 x 1600 px)
 Branding Banner L1 (3000 x 1150 px)
 Branding Banner L2 (3000 x 1150 px)



Poster L1 (1600 x 1200 px)
 TVL1 (1920 x 1080 px)
 Banner P1 (1150 x 3000 px)

Poster P1 (1200 x 1600 px)
 TVL1 (1920 x 1080 px)
 Poster P2 (1200 x 1600 px)
 Banner P1 (1150 x 3000 px)
 Poster P3 (1200 x 1600 px)

Branding Banner L3 (3000 x 1150 px)
 Poster P1 (1200 x 1600 px)
 TVL1 (1920 x 1080 px)
 Poster P2 (1200 x 1600 px)

TVL1 (1920 x 1080 px)
 Banner L1 (3000 x 1150 px)

Medium- 0009



Branding Poster L1 (1600 x 1200 px)
Branding Banner L1 (3000 x 1150 px)

Step 1: Select your virtual booth.

Step 2: Provide the desired content for each area following the dimensions specified below. You can choose to put any content in the interactive places such as: images, audio, videos, links, documents, etc.

Step 3: Submit your content and form to the dropbox folder that will be emailed to you by Simulocity.

***Branding cannot be linked to content.**

****The images for the content spaces in the walls have to be the exact pixel size of the posters/TVs/banners within your booth number, in JPG/JPEG format. The linked content can be any size.**



TVL1 (1920 x 1080 px)
Poster L3 (1600 x 1200 px)



Poster L1 (1600 x 1200 px)
Banner P1 (1150 x 3000 px)
Banner P2 (1150 x 3000 px)

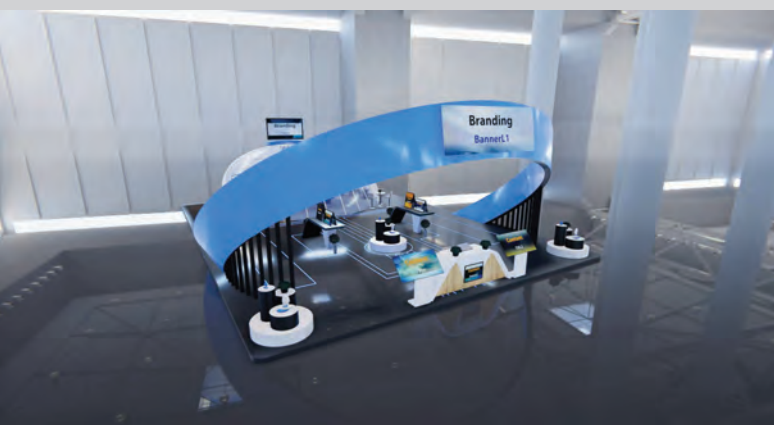


Branding Banner L2 (3000 x 1150 px)
Poster L1 (1600 x 1200 px)
TVL1 (1920 x 1080 px)
Banner P1 (1150 x 3000 px)



Poster L1 (1600 x 1200 px)
Poster L2 (1600 x 1200 px)
TVL1 (1920 x 1080 px)
Branding Banner L3 (3000 x 1150 px)

Medium- 0010



Branding Banner L1 (3000 x 1500 px)

Step 1: Select your virtual booth.

Step 2: Provide the desired content for each area following the dimensions specified below. You can choose to put any content in the interactive places such as: images, audio, videos, links, documents, etc.

Step 3: Submit your content and form to the dropbox folder that will be emailed to you by Simulocity.

***Branding cannot be linked to content.**

****The images for the content spaces in the walls have to be the exact pixel size of the posters/TVs/banners within your booth number, in JPG/JPEG format. The linked content can be any size.**



TVL1 (1920 x 1080 px)
Poster L1 (1600 x 1200 px)
TVL2 (1920 x 1080 px)
Branding TVL1 (1920 x 1080 px)



Poster P1 (1200 x 1600 px)
Poster L1 (1600 x 1200 px)

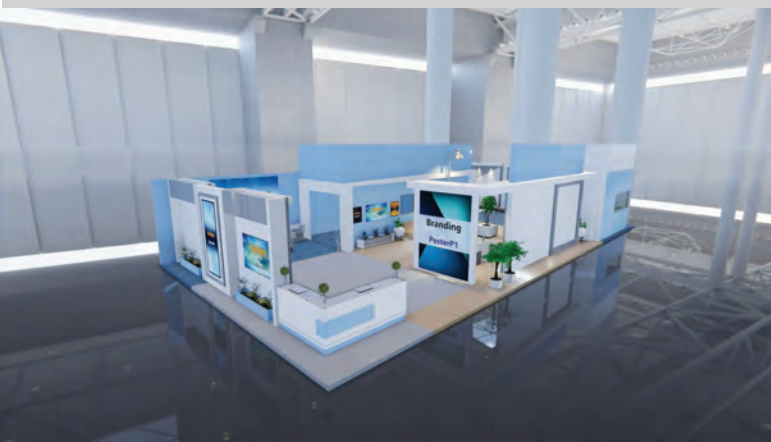


Banner P1 (1150 x 3000 px)
Poster P1 (1200 x 1600 px)
Poster P2 (1200 x 1600 px)
Branding Banner L2 (3000 x 1150 px)



Poster L1 (1600 x 1200 px)
TVL1 (1920 x 1080 px)
Poster L2 (1600 x 1200 px)
Branding Poster L1 (1600 x 1200 px)

Medium-0011



Step 1: Select your virtual booth.

Step 2: Provide the desired content for each area following the dimensions specified below. You can choose to put any content in the interactive places such as: images, audio, videos, links, documents, etc.

Step 3: Submit your content and form to the dropbox folder that will be emailed to you by Simulocity.

***Branding cannot be linked to content.**

****The images for the content spaces in the walls have to be the exact pixel size of the posters/TVs/banners within your booth number, in JPG/JPEG format. The linked content can be any size.**

Branding Poster P1 (1200 x 1600 px)



Banner P1 (1150 x 3000 px)
TVL1 (1920 x 1080 px)
Branding Banner L1 (3000 x 1150 px)

Poster P1 (1200 x 1600 px)
TVL1 (1920 x 1080 px)
Poster P2 (1200 x 1600 px)

Branding Banner L2 (3000 x 1150 px)
Banner P1 (1150 x 3000 px)
Poster L1 (1600 x 1200 px)
Poster L2 (1600 x 1200 px)
Poster L3 (1600 x 1200 px)
Banner P2 (1150 x 3000 px)

Branding Banner L1 (3000 x 1150 px)
TVL1 (1920 x 1080 px)
Poster P1 (1200 x 1600 px)
Poster P2 (1200 x 1600 px)

Medium-0012



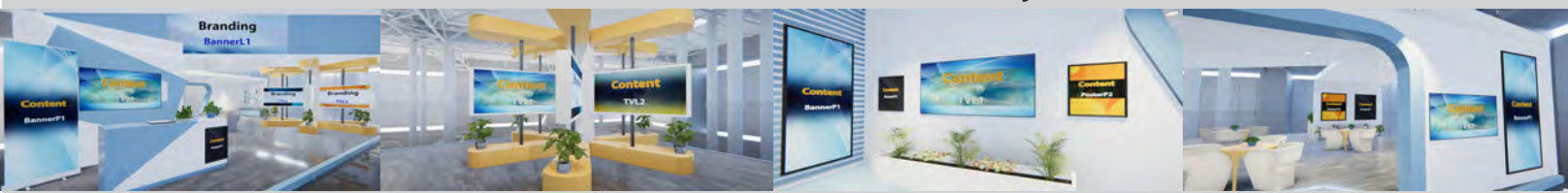
Step 1: Select your virtual booth.

Step 2: Provide the desired content for each area following the dimensions specified below. You can choose to put any content in the interactive places such as: images, audio, videos, links, documents, etc.

Step 3: Submit your content and form to the dropbox folder that will be emailed to you by Simulocity.

***Branding cannot be linked to content.**

****The images for the content spaces in the walls have to be the exact pixel size of the posters/TVs/banners within your booth number, in JPG/JPEG format. The linked content can be any size.**



Banner P1 (1150 x 3000 px)
TVL1 (1920 x 1080)
Poster P1 (1200 x 1600 px)
Branding Banner L1 (3000 x 1150 px)

TVL1 (1920 x 1080 px)
TVL2 (1920 x 1080 px)

Banner P1 (1150 x 3000 px)
TVL1 (1920 x 1080 px)
Poster P1 (1200 x 1600 px)
Poster P2 (1200 x 1600 px)

Poster P1 (1200 x 1600 px)
Poster P2 (1200 x 1600 px)
TVL1 (1920 x 1080 px)
Banner P1 (1150 x 3000 px)

Medium- 0013



Step 1: Select your virtual booth.

Step 2: Provide the desired content for each area following the dimensions specified below. You can choose to put any content in the interactive places such as: images, audio, videos, links, documents, etc.

Step 3: Submit your content and form to the dropbox folder that will be emailed to you by Simulocity.

***Branding cannot be linked to content.**

****The images for the content spaces in the walls have to be the exact pixel size of the posters/TVs/banners within your booth number, in JPG/JPEG format. The linked content can be any size.**



Branding Banner L1 (3000 x 1150 px)
Poster P1 (1200 x 1600 px)
TVL1 (1920 x 1080 px)
Poster P2 (1200 x 1600 px)
Poster P3 (1200 x 1600 px)
Branding Square 1 (1000 x 1000 px)



Banner P1 (1150 x 3000 px)
TVL1 (1920 x 1080 px)
Poster L1 (1600 x 1200 px)
Poster L2 (1600 x 1200 px)



Branding Banner L2 (3000 x 1150 px)
Poster P1 (1200 x 1600 px)
TVL1 (1920 x 1080 px)
Poster P2 (1200 x 1600 px)



Poster L1 (1600 x 1200 px)
Poster P1 (1200 x 1600 px)

Medium- 0014



Step 1: Select your virtual booth.

Step 2: Provide the desired content for each area following the dimensions specified below. You can choose to put any content in the interactive places such as: images, audio, videos, links, documents, etc.

Step 3: Submit your content and form to the dropbox folder that will be emailed to you by Simulocity.

***Branding cannot be linked to content.**

****The images for the content spaces in the walls have to be the exact pixel size of the posters/TVs/banners within your booth number, in JPG/JPEG format. The linked content can be any size.**

Branding Square 1 (1000 x 1000 px)
Branding Square 2 (1000 x 1000 px)



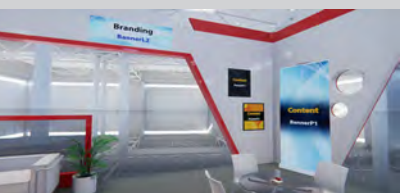
Poster P1 (1200 x 1600 px)
Poster P2 (1200 x 1600 px)
Poster P3 (1200 x 1600 px)



TVL1 (1920 x 1080 px)
Poster P1 (1200 x 1600 px)
TVL2 (1920 x 1080 px)



TVL1 (1920 x 1080 px)
Poster L1 (1600 x 1200 px)
Banner L1 (3000 x 1150 px)
Poster L2 (1600 x 1200 px)



Branding Banner L2 (3000 x 1150 px)
Poster P1 (1200 x 1600 px)
Poster P2 (1200 x 1600 px)
Banner P1 (1150 x 3000 px)

Medium-0015



Step 1: Select your virtual booth.

Step 2: Provide the desired content for each area following the dimensions specified below. You can choose to put any content in the interactive places such as: images, audio, videos, links, documents, etc.

Step 3: Submit your content and form to the dropbox folder that will be emailed to you by Simulocity.

***Branding cannot be linked to content.**

****The images for the content spaces in the walls have to be the exact pixel size of the posters/TVs/banners within your booth number, in JPG/JPEG format. The linked content can be any size.**



Branding Banner L1 (3000 x 1150 px)

TVL1 (1920 x 1080 px)

Poster P1 (1200 x 1600 px)

Poster P2 (1200 x 1600 px)

Branding Banner L2 (3000 x 1150 px)

Branding Banner L3 (3000 x 1150 px)

Poster L1 (1600 x 1200 px)

Poster P1 (1200 x 1600 px)

Banner P1 (1150 x 3000 px)

Poster P2 (1200 x 1600 px)

TVL1 (1920 x 1080 px)

Poster P1 (1200 x 1600 px)

Poster P2 (1200 x 1600 px)

Banner P1 (3000 x 1150 px)

TVL1 (1920 x 1080 px)

Poster L1 (1600 x 1200 px)

Medium-0016



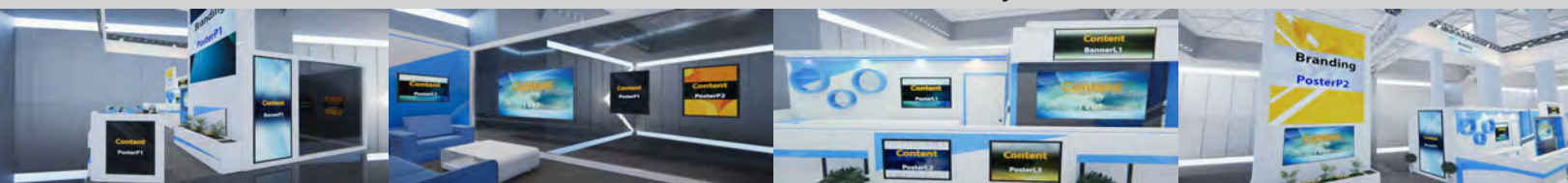
Step 1: Select your virtual booth.

Step 2: Provide the desired content for each area following the dimensions specified below. You can choose to put any content in the interactive places such as: images, audio, videos, links, documents, etc.

Step 3: Submit your content and form to the dropbox folder that will be emailed to you by Simulocity.

***Branding cannot be linked to content.**

****The images for the content spaces in the walls have to be the exact pixel size of the posters/TVs/banners within your booth number, in JPG/JPEG format. The linked content can be any size.**



Branding Poster P1 (1200 x 1600 px)

Poster P1 (1200 x 1600 px)

Banner P1 (1150 x 3000 px)

Poster L1 (1600 x 1200 px)

TVL1 (1920 x 1080 px)

Poster P1 (1200 x 1600 px)

Poster P2 (1200 x 1600 px)

Poster L1 (1600 x 1200 px)

Poster L2 (1600 x 1200 px)

Poster L3 (1600 x 1200 px)

Banner L1 (3000 x 1150 px)

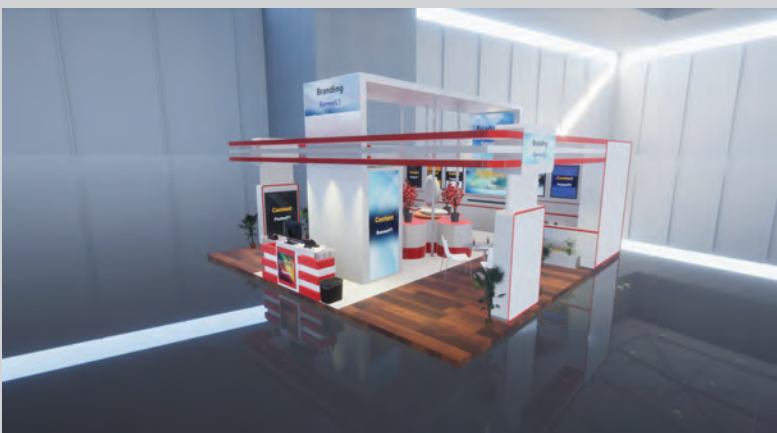
TVL1 (1920 x 1080 px)

Branding Poster P2 (1200 x 1600 px)

TVL1 (1920 x 1080 px)

Banner P1 (1150 x 3000 px)

Medium-0017



Step 1: Select your virtual booth.

Step 2: Provide the desired content for each area following the dimensions specified below. You can choose to put any content in the interactive places such as: images, audio, videos, links, documents, etc.

Step 3: Submit your content and form to the dropbox folder that will be emailed to you by Simulocity.

***Branding cannot be linked to content.**

****The images for the content spaces in the walls have to be the exact pixel size of the posters/TVs/banners within your booth number, in JPG/JPEG format. The linked content can be any size..**

Branding Banner L1 (3000 x 1150 px) Branding Square 2 (1000 x 1000 px)
 Branding Banner L2 (3000 x 1150 px)
 Branding Square 1 (1000 x 1000 px)



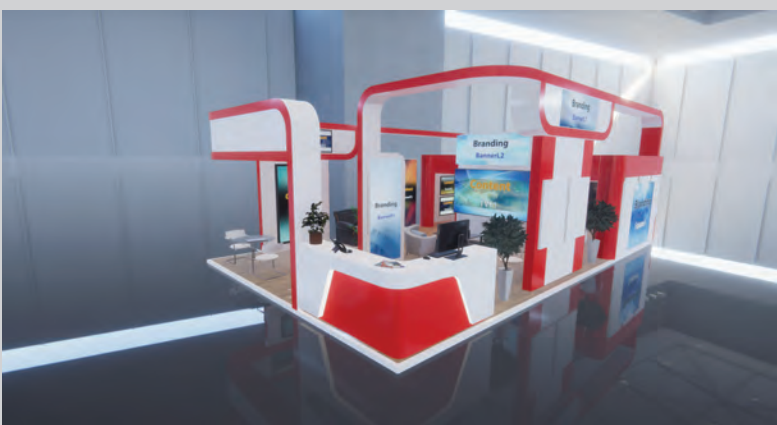
Banner P1 (1150 x 3000 px)
 Poster P1 (1200 x 1600 px)

Poster P1 (1200 x 1600 px)
 Banner P1 (1150 x 3000 px)

TVP1 (1080 x 1920 px)

TVL1 (1920 x 1080 px)
 TVP1 (1080 x 1920 px)
 Poster P1 (1200 x 1600 px)
 Poster P2 (1200 x 1600 px)
 Poster P3 (1200 x 1600 px)
 Poster P4 (1200 x 1600 px)
 Poster P5 (1200 x 1600 px)
 Poster P6 (1200 x 1600 px)

Medium-0018



Step 1: Select your virtual booth.

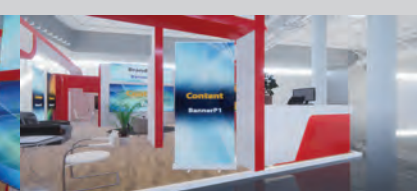
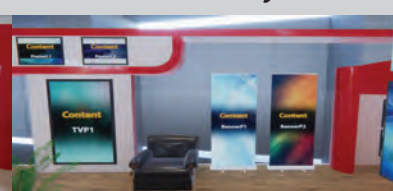
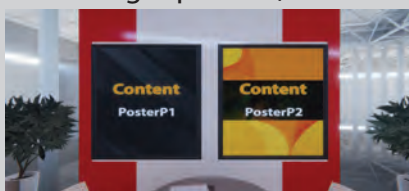
Step 2: Provide the desired content for each area following the dimensions specified below. You can choose to put any content in the interactive places such as: images, audio, videos, links, documents, etc.

Step 3: Submit your content and form to the dropbox folder that will be emailed to you by Simulocity.

***Branding cannot be linked to content.**

****The images for the content spaces in the walls have to be the exact pixel size of the posters/TVs/banners within your booth number, in JPG/JPEG format. The linked content can be any size.**

Branding Banner L1 (3000 x 1150 px) Branding Banner p1 (1150 x 3000 px)
 Branding Banner L2 (3000 x 1150 px)
 Branding Square 1 (1000 x 1000 px)



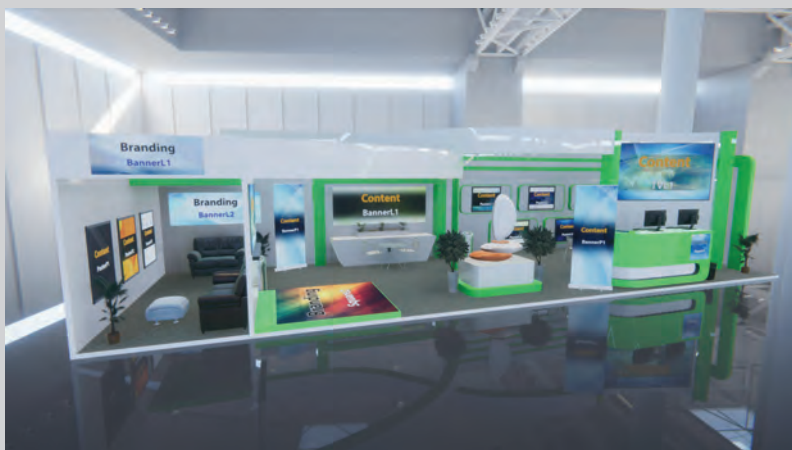
Poster P1 (1200 x 1600 px)
 Poster P2 (1200 x 1600 px)

TVL1 (1920 x 1080 px)
 Poster L1 (1600 x 1200 px)
 Poster L2 (1600 x 1200 px)
 Poster L3 (1600 x 1200 px)
 Poster L4 (1600 x 1200 px)

Poster L1 (1600 x 1200 px)
 Poster L2 (1600 x 1200 px)
 TVP1 (1080 x 1920 px)
 Banner P1 (1150 x 3000 px)
 Banner P2 (1150 x 300 px)

Banner P1 (1150 x 3000 px)

Medium-0019



Step 1: Select your virtual booth.

Step 2: Provide the desired content for each area following the dimensions specified below. You can choose to put any content in the interactive places such as: images, audio, videos, links, documents, etc.

Step 3: Submit your content and form to the dropbox folder that will be emailed to you by Simulocity.

***Branding cannot be linked to content.**

****The images for the content spaces in the walls have to be the exact pixel size of the posters/TVs/banners within your booth number, in JPG/JPEG format. The linked content can be any size.**

Branding Banner L1 (3000 x 1150 px)

Branding Square 1 (1000 x 1000 px)

Branding Square 2 (1000 x 1000 px)



Banner P1 (1150 x 3000 px)

TVL1 (1920 x 1080 px)

Poster L1 (1600 x 1200 px)

Poster L2 (1600 x 1200 px)

Poster L3 (1600 x 1200 px)

Poster L4 (1600 x 1200 px)

Poster L5 (1600 x 1200 px)

TVL1 (1920 x 1080 px)

Banner L1 (3000 x 1150 px)

Banner P1 (1150 x 3000 px)

Branding Banner L2 (3000 x 1150 px)

Poster P1 (1200 x 1600 px)

Poster P2 (1200 x 1600 px)

Poster P3 (1200 x 1600 px)

Medium-0020



Step 1: Select your virtual booth.

Step 2: Provide the desired content for each area following the dimensions specified below. You can choose to put any content in the interactive places such as: images, audio, videos, links, documents, etc.

Step 3: Submit your content and form to the dropbox folder that will be emailed to you by Simulocity.

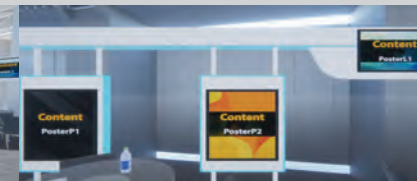
***Branding cannot be linked to content.**

****The images for the content spaces in the walls have to be the exact pixel size of the posters/TVs/banners within your booth number, in JPG/JPEG format. The linked content can be any size.**

Branding Banner L1 (3000 x 1150 px)

Branding Square 1 (1000 x 1000 px)

Branding Square 2 (1000 x 1000 px)



Poster L1 (1600 x 1200 px)

Poster P1 (1200 x 1600 px)

Poster P2 (1200 x 1600 px)

Branding Banner L2 (3000 x 1150 px)

Banner P1 (1150 x 3000 px)

TVL1 (1920 x 1080 px)

TVP1 (1080 x 1920 px)

Poster L1 (1600 x 1200 px)

Poster P1 (1200 x 1600 px)

Poster P2 (1200 x 1600 px)

Poster L1 (1600 x 1200 px)

Banner P1 (1150 x 3000 px)

Banner P2 (1150 x 3000 px)

Medium- 0021



Branding Banner P1 (1150 x 3000 px)
Branding Poster L1 (1600 x 1200 px)

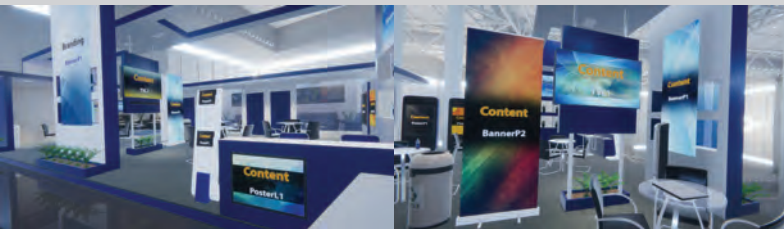
Step 1: Select your virtual booth.

Step 2: Provide the desired content for each area following the dimensions specified below. You can choose to put any content in the interactive places such as: images, audio, videos, links, documents, etc.

Step 3: Submit your content and form to the dropbox folder that will be emailed to you by Simulocity.

***Branding cannot be linked to content.**

****The images for the content spaces in the walls have to be the exact pixel size of the posters/TVs/banners within your booth number, in JPG/JPEG format. The linked content can be any size.**



Poster L1 (1600 x 1200 px)
TVL2 (1920 x 1080 px)
Poster P1 (1200 x 1600 px)

Banner P2 (1150 x 3000 px)
TVL1 (1920 x 1080 px)
Banner P1 (1150 x 3000 px)



Poster L3 (1600 x 1200 px)
Branding Poster L1 (1600 x 1200 px)
Poster L4 (1600 x 1200 px)
Poster L5 (1600 x 1200 px)



Poster P1 (1200 x 1600 px)
Poster P2 (1200 x 1600 px)
Poster P3 (1200 x 1600 px)
Branding Square 1 (1000 x 1000 px)

Medium- 0022



Branding Banner P1 (1150 x 3000 px)
Branding Banner L1 (3000 x 1150 px)
Banner P1 (1150 x 3000 px)

Poster P1 (1200 x 1600 px)
Poster P2 (1200 x 1600 px)
Poster P3 (1200 x 1600 px)
Poster P4 (1200 x 1600 px)
Branding Poster P5 (1200 x 1600 px)

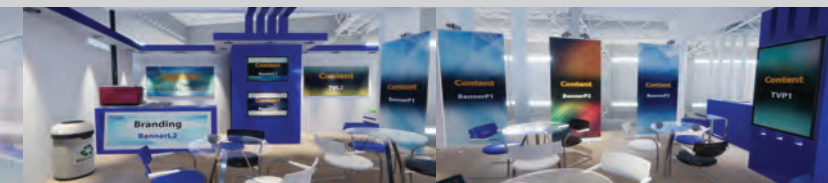
Step 1: Select your virtual booth.

Step 2: Provide the desired content for each area following the dimensions specified below. You can choose to put any content in the interactive places such as: images, audio, videos, links, documents, etc.

Step 3: Submit your content and form to the dropbox folder that will be emailed to you by Simulocity.

***Branding cannot be linked to content.**

****The images for the content spaces in the walls have to be the exact pixel size of the posters/TVs/banners within your booth number, in JPG/JPEG format. The linked content can be any size.**



Branding Banner L2 (3000 x 1150 px)
Poster L1 (1600 x 1200 px)
Poster L2 (1600 x 1200 px)
TVL1 (1920 x 1080 px)
TVL2 (1920 x 1080 px)
Banner P1 (1150 x 3000 px)

Banner P1 (1150 x 3000 px)
Banner P2 (1150 x 3000 px)
Banner P3 (1150 x 3000 px)
TVP1 (1080 x 1920 px)

Medium- 0023



Branding Square 1 (1000 x 1000 px)

Step 1: Select your virtual booth.

Step 2: Provide the desired content for each area following the dimensions specified below. You can choose to put any content in the interactive places such as: images, audio, videos, links, documents, etc.

Step 3: Submit your content and form to the dropbox folder that will be emailed to you by Simulocity.

***Branding cannot be linked to content.**

****The images for the content spaces in the walls have to be the exact pixel size of the posters/TVs/banners within your booth number, in JPG/JPEG format. The linked content can be any size.**



Poster P1 (1200 x 1600 px)
Poster P2 (1200 x 1600 px)
Poster P3 (1200 x 1600 px)

Branding Banner L1 (3000 x 1150 px)
Poster P4 (1200 x 1600 px)
Poster P5 (1200 x 1600 px)
Poster P6 (1200 x 1600 px)
TVL1 (1920 x 1080 px)

Poster P4 (1200 x 1600 px)
Poster P5 (1200 x 1600 px)
Poster P6 (1200 x 1600 px)
TVL2 (1920 x 1080 px)

Banner P2 (1150 x 3000 px)
Banner P1 (1150 x 3000 px)

Medium- 0024



Branding Banner L1 (3000 x 1150 px)
Branding Square 1 (1000 x 1000 px)

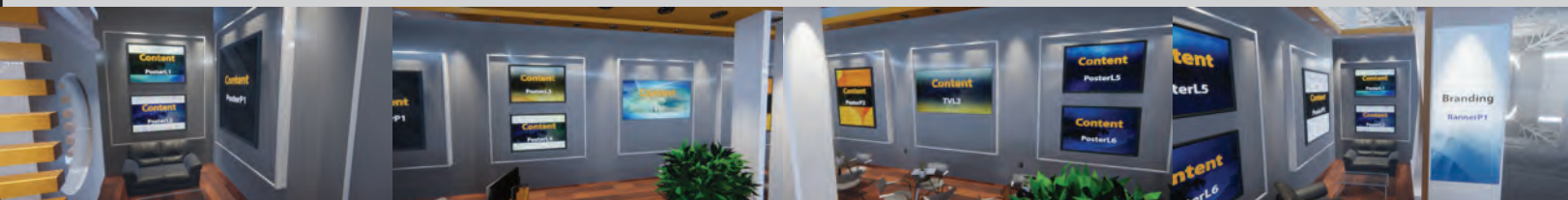
Step 1: Select your virtual booth.

Step 2: Provide the desired content for each area following the dimensions specified below. You can choose to put any content in the interactive places such as: images, audio, videos, links, documents, etc.

Step 3: Submit your content and form to the dropbox folder that will be emailed to you by Simulocity.

***Branding cannot be linked to content.**

****The images for the content spaces in the walls have to be the exact pixel size of the posters/TVs/banners within your booth number, in JPG/JPEG format. The linked content can be any size.**



Poster L1 (1600 x 1200 px)
Poster L2 (1600 x 1200 px)
Poster P1 (1200 x 1600 px)

Poster L3 (1600 x 1200 px)
Poster L4 (1600 x 1200 px)
TVL1 (1920 x 1080 px)

Poster 2 (1200 x 1600 px)
TVL2 (1920 x 1080 px)
Poster L5 (1600 x 1200 px)
Poster L6 (1600 x 1200 px)

Poster P3 (1200 x 1600 px)
Poster L1 (1600 x 1200 px)
Poster L2 (1600 x 1200 px)
Branding Banner P1 (1150 x 3000 px)

Medium- 0025



Step 1: Select your virtual booth.

Step 2: Provide the desired content for each area following the dimensions specified below. You can choose to put any content in the interactive places such as: images, audio, videos, links, documents, etc.

Step 3: Submit your content and form to the dropbox folder that will be emailed to you by Simulocity.

***Branding cannot be linked to content.**

****The images for the content spaces in the walls have to be the exact pixel size of the posters/TVs/banners within your booth number, in JPG/JPEG format. The linked content can be any size.**

Branding Square 1 (1000 x 1000 px)



Poster P1 (1200 x 1600 px)
Banner P1 (1150 x 3000 px)



Poster P1 (1200 x 1600 px)
Poster P2 (1200 x 1600 px)
Poster P3 (1200 x 1600 px)
Poster P4 (1200 x 1600 px)
Poster P5 (1200 x 1600 px)



TVL1 (1920 x 1080 px)
Branding Poster L1 (1600 x 1200 px)
Poster L1 (1600 x 1200 px)

TVL1 (1920 x 1080 px)
Poster L2 (1600 x 1200 px)
Poster L3 (1600 x 1200 px)
Poster L4 (1600 x 1200 px)
Branding Poster L2 (1600 x 1200 px)

Medium- 0026



Step 1: Select your virtual booth.

Step 2: Provide the desired content for each area following the dimensions specified below. You can choose to put any content in the interactive places such as: images, audio, videos, links, documents, etc.

Step 3: Submit your content and form to the dropbox folder that will be emailed to you by Simulocity.

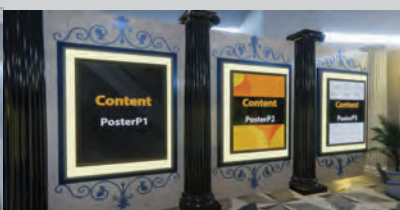
***Branding cannot be linked to content.**

****The images for the content spaces in the walls have to be the exact pixel size of the posters/TVs/banners within your booth number, in JPG/JPEG format. The linked content can be any size.**

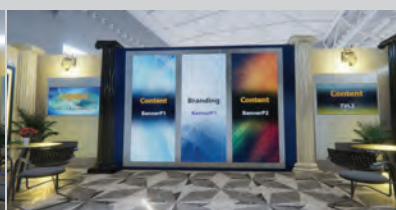
Branding Banner L1 (3000 x 1150 px)
Branding Banner L2 (3000 x 1150 px)



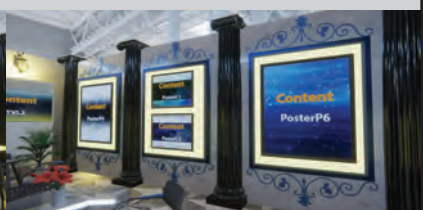
Banner L1 (3000 x 1150 px)
Banner L2 (3000 x 1150 px)



Poster P1 (1200 x 1600 px)
Poster P2 (1200 x 1600 px)
Poster P3 (1200 x 1600 px)



TVL1 (1920 x 1080 px)
Banner P1 (1150 x 3000 px)
Branding Banner P1 (1150 x 3000 px)
Banner P2 (1150 x 3000 px)
TVL2 (1920 x 1080 px)



Poster P1 (1200 x 1600 px)
Poster L1 (1600 x 1200 px)
Poster L2 (1600 x 1200 px)
Poster P6 (1200 x 1600 px)

Medium- 0027



Step 1: Select your virtual booth.

Step 2: Provide the desired content for each area following the dimensions specified below. You can choose to put any content in the interactive places such as: images, audio, videos, links, documents, etc.

Step 3: Submit your content and form to the dropbox folder that will be emailed to you by Simulocity.

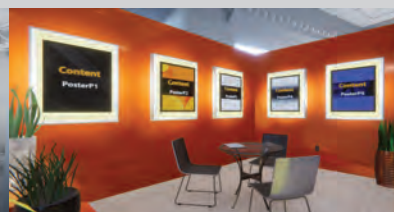
***Branding cannot be linked to content.**

****The images for the content spaces in the walls have to be the exact pixel size of the posters/TVs/banners within your booth number, in JPG/JPEG format. The linked content can be any size.**

- Branding Banner L1 (3000 x 1150 px)
- Branding Banner L2 (3000 x 1150 px)
- Branding Banner L3 (3000 x 1150 px)



Poster P1 (1200 x 1600 px)



- Poster P1 (1200 x 1600 px)
- Poster P2 (1200 x 1600 px)
- Poster P3 (1200 x 1600 px)
- Poster P4 (1200 x 1600 px)
- Poster P5 (1200 x 1600 px)



- Poster P1 (1200 x 1600 px)
- Poster L1 (1600 x 1200 px)
- Poster L2 (1600 x 1200 px)
- TVL2(1920 x 1080 px)



- TVL1 (1920 x 1080 px)
- Poster P3 (1200 x 1600 px)
- Poster P4 (1200 x 1600 px)

Medium- 0028



Step 1: Select your virtual booth.

Step 2: Provide the desired content for each area following the dimensions specified below. You can choose to put any content in the interactive places such as: images, audio, videos, links, documents, etc.

Step 3: Submit your content and form to the dropbox folder that will be emailed to you by Simulocity.

***Branding cannot be linked to content.**

****The images for the content spaces in the walls have to be the exact pixel size of the posters/TVs/banners within your booth number, in JPG/JPEG format. The linked content can be any size.**

- Branding Banner L1 (3000 x 1150 px)
- Branding Banner L2 (3000 x 1150 px)
- Branding Banner L3 (3000 x 1150 px)
- Branding Banner L3 (3000 x 1150 px)



- Poster P1 (1200 x 1600 px)
- TVL1 (1920 x 1080 px)
- Poster P2 (1200 x 1600 px)



- Poster P3 (1200 x 1600 px)
- Poster L1 (1600 x 1200 px)
- Poster L2 (1600 x 1200 px)



- Banner P1 (1150 x 3000 px)
- Banner P2 (1150 x 3000 px)
- Banner P3 (1150 x 3000 px)
- TVL2 (1920 x 1080 px)



- Poster L3 (1600 x 1200 px)
- Poster L4 (1600 x 1200 px)
- Poster P4 (1200 x 1600 px)

Medium- 0029



Branding Square 1 (1000 x 1000 px)

Step 1: Select your virtual booth.

Step 2: Provide the desired content for each area following the dimensions specified below. You can choose to put any content in the interactive places such as: images, audio, videos, links, documents, etc.

Step 3: Submit your content and form to the dropbox folder that will be emailed to you by Simulocity.

***Branding cannot be linked to content.**

****The images for the content spaces in the walls have to be the exact pixel size of the posters/TVs/banners within your booth number, in JPG/JPEG format. The linked content can be any size.**



Branding Banner L1 (3000 x 1150 px)
Poster P1 (1200 x 1600 px)
Poster P2 (1200 x 1600 px)
Poster P3 (1200 x 1600 px)
Poster P4 (1200 x 1600 px)

Poster P5 (1200 x 1600 px)
TVL1 (1920 x 1080 px)
Poster P6 (1200 x 1600 px)

Branding Banner L2 (3000 x 1150 px)
Poster P5 (1200 x 1600 px)
TVL1 (1920 x 1080 px)
Poster P6 (1200 x 1600 px)

Banner P1 (1150 x 3000 px)
Banner P2 (1150 x 3000 px)
Poster P1 (1200 x 1600 px)
Branding Banner L3 (3000 x 1150 px)

Medium- 0030



Branding Banner L1 (3000 x 1150 px)
Branding Square 1 (1000 x 1000 px)

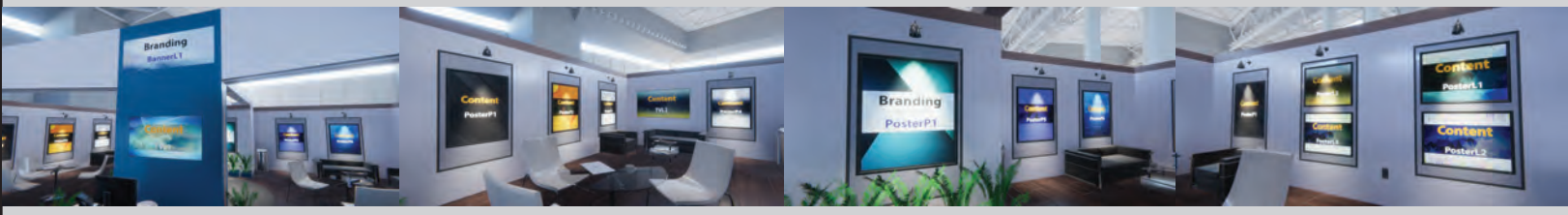
Step 1: Select your virtual booth.

Step 2: Provide the desired content for each area following the dimensions specified below. You can choose to put any content in the interactive places such as: images, audio, videos, links, documents, etc.

Step 3: Submit your content and form to the dropbox folder that will be emailed to you by Simulocity.

***Branding cannot be linked to content.**

****The images for the content spaces in the walls have to be the exact pixel size of the posters/TVs/banners within your booth number, in JPG/JPEG format. The linked content can be any size.**



TVL1 (1920 x 1080 px)

Poster P1 (1200 x 1600 px)
Poster P2 (1200 x 1600 px)
Poster P3 (1200 x 1600 px)
TVL1 (1920 x 1080 px)
Poster P4 (1200 x 1600 px)

Branding Poster P1 (1200 x 1600 px)
Poster P5 (1200 x 1600 px)
Poster P6 (1200 x 1600 px)

Poster P1 (1200 x 1600 px)
Poster L3 (1600 x 1200 px)
Poster L4 (1600 x 1200 px)
Poster L1 (1600 x 1200 px)
Poster L2 (1600 x 1200 px)

Medium-0031



Step 1: Select your virtual booth.

Step 2: Provide the desired content for each area following the dimensions specified below. You can choose to put any content in the interactive places such as: images, audio, videos, links, documents, etc.

Step 3: Submit your content and form to the dropbox folder that will be emailed to you by Simulocity.

***Branding cannot be linked to content.**

****The images for the content spaces in the walls have to be the exact pixel size of the posters/TVs/banners within your booth number, in JPG/JPEG format. The linked content can be any size.**

Branding Square 1 (1000 x 1000 px)
 Branding Banner L1 (3000 x 1150 px)
 Branding Banner L2 (3000 x 1150 px)
 Branding Banner L3 (3000 x 1150 px)



Poster L1 (1600 x 1200 px)
 Poster L2 (1600 x 1200 px)
 TVL1 (1920 x 1080 px)

Poster P1 (1200 x 1600 px)
 Poster P2 (1200 x 1600 px)
 Poster P3 (1200 x 1600 px)
 TVL2 (1920 x 1080 px)
 Poster P4 (1200 x 1600 px)

Poster P5 (1200 x 1600 px)
 Poster P6 (1200 x 1600 px)
 Poster P1 (1200 x 1600 px)
 Poster P2 (1200 x 1600 px)

TVL2 (1920 x 1080 px)

Medium-0032



Step 1: Select your virtual booth.

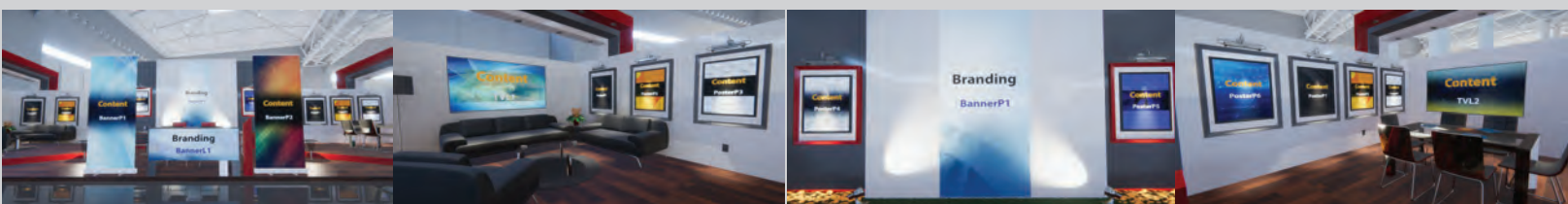
Step 2: Provide the desired content for each area following the dimensions specified below. You can choose to put any content in the interactive places such as: images, audio, videos, links, documents, etc.

Step 3: Submit your content and form to the dropbox folder that will be emailed to you by Simulocity.

***Branding cannot be linked to content.**

****The images for the content spaces in the walls have to be the exact pixel size of the posters/TVs/banners within your booth number, in JPG/JPEG format. The linked content can be any size.**

Branding Square 1 (1000 x 1000 px)
 Branding Square 2 (1000 x 1000 px)



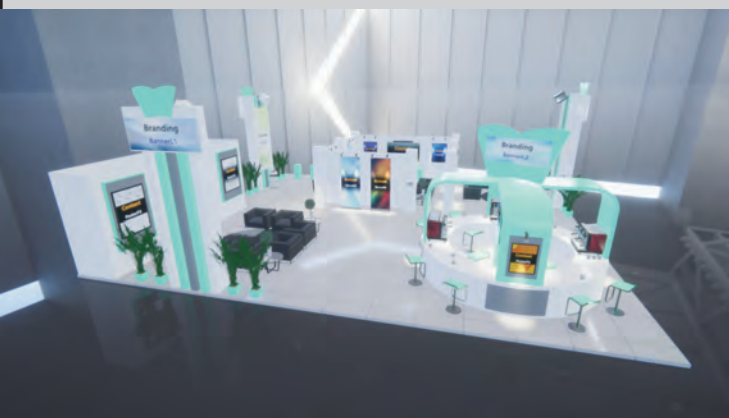
Banner P1 (1150 x 3000 px)
 Branding Banner P1 (1150 x 3000 px)
 Branding Banner L1 (3000 x 1150 px)
 Banner P2 (1150 x 3000 px)

TVL1 (1920 x 1080 px)
 Poster P1 (1200 x 1600 px)
 Poster P2 (1200 x 1600 px)
 Poster P3 (1200 x 1600 px)

Poster P4 (1200 x 1600 px)
 Branding Banner P1 (1500 x 3000 px)
 Poster P5 (1200 x 1600 px)

Poster P6 (1200 x 1600 px)
 Poster P1 (1200 x 1600 px)
 Poster P2 (1200 x 1600 px)
 Poster P3 (1200 x 1600 px)
 TVL2 (1920 x 1080 px)

Medium- 0033



Step 1: Select your virtual booth.

Step 2: Provide the desired content for each area following the dimensions specified below. You can choose to put any content in the interactive places such as: images, audio, videos, links, documents, etc.

Step 3: Submit your content and form to the dropbox folder that will be emailed to you by Simulocity.

***Branding cannot be linked to content.**

****The images for the content spaces in the walls have to be the exact pixel size of the posters/TVs/banners within your booth number, in JPG/JPEG format. The linked content can be any size.**

Branding Banner L1 (3000 x 1150 px)
Branding Banner L2 (3000 x 1150 px)
Branding Banner P1 (1150 x 3000 px)



Poster P1 (1200 x 1600 px)
Banner P1 (1150 x 3000 px)
Poster P2 (1200 x 1600 px)
Banner P2 (1150 x 3000 px)

Poster P3 (1200 x 1600 px)
TVL1 (1920 x 1080 px)
Poster P4 (1200 x 1600 px)

Banner P1 (1150 x 3000 px)
Banner P2 (1150 x 3000 px)

Banner P2 (1150 x 3000 px)
Poster P5 (1200 x 1600 px)
TVL2 (1920 x 1080 px)
Poster P6 (1200 x 1600 px)
Branding Banner P2 (1150 x 3000 px)

Medium- 0034



Step 1: Select your virtual booth.

Step 2: Provide the desired content for each area following the dimensions specified below. You can choose to put any content in the interactive places such as: images, audio, videos, links, documents, etc.

Step 3: Submit your content and form to the dropbox folder that will be emailed to you by Simulocity.

***Branding cannot be linked to content.**

****The images for the content spaces in the walls have to be the exact pixel size of the posters/TVs/banners within your booth number, in JPG/JPEG format. The linked content can be any size.**

Branding Banner L1 (3000 x 1150 px)
Branding Banner L2 (3000 x 1150 px)



TVL1 (1920 x 1080 px)
Poster L1 (1600 x 1200 px)
Poster L2 (1600 x 1200 px)

Poster P1 (1200 x 1600 px)
Poster P2 (1200 x 1600 px)
Poster P3 (1200 x 1600 px)

Poster P4 (1200 x 1600 px)
Poster P5 (1200 x 1600 px)
Poster P1 (1200 x 1600 px)
Poster P2 (1200 x 1600 px)

Poster P2 (1200 x 1600 px)
Poster P3 (1200 x 1600 px)
TVL2 (1920 x 1080 px)

Medium- 0035



Branding Banner L1 (3000 x 1150 px)
Branding Banner L2 (3000 x 1150 px)

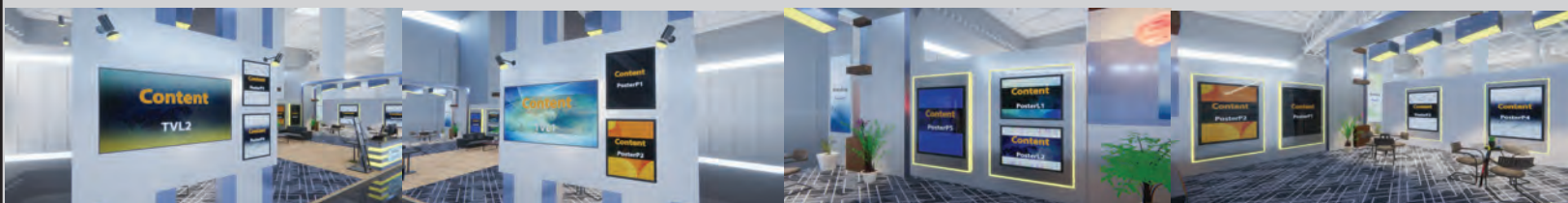
Step 1: Select your virtual booth.

Step 2: Provide the desired content for each area following the dimensions specified below. You can choose to put any content in the interactive places such as: images, audio, videos, links, documents, etc.

Step 3: Submit your content and form to the dropbox folder that will be emailed to you by Simulocity.

***Branding cannot be linked to content.**

****The images for the content spaces in the walls have to be the exact pixel size of the posters/TVs/banners within your booth number, in JPG/JPEG format. The linked content can be any size.**



TVL2 (1920 x 1080 px)
Poster P3 (1200 x 1600 px)
Poster P4 (1200 x 1600 px)

TVL1 (1920 x 1080 px)
Poster P1 (1200 x 1600 px)
Poster P2 (1200 x 1600 px)

Branding Banner P2 (1150 x 3000 px)
Poster P5 (1200 x 1600 px)
Poster L1 (1600 x 1200 px)
Poster L2 (1600 x 1200 px)

Poster P1 (1200 x 1600 px)
Poster P2 (1200 x 1600 px)
Poster P3 (1200 x 1600 px)
Poster P4 (1200 x 1600 px)
Branding Banner P2 (1150 x 3000 px)

Medium- 0036



Branding Square 1 (1000 x 1000 px)
Branding Square 2 (1000 x 1000 px)
Branding Square 3 (1000 x 1000 px)

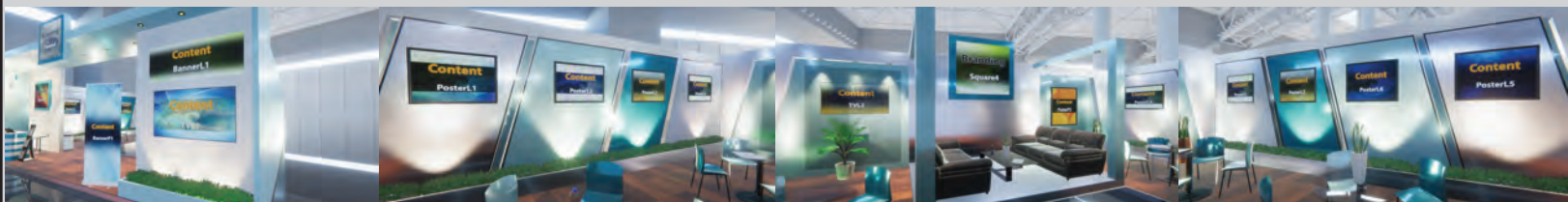
Step 1: Select your virtual booth.

Step 2: Provide the desired content for each area following the dimensions specified below. You can choose to put any content in the interactive places such as: images, audio, videos, links, documents, etc.

Step 3: Submit your content and form to the dropbox folder that will be emailed to you by Simulocity.

***Branding cannot be linked to content.**

****The images for the content spaces in the walls have to be the exact pixel size of the posters/TVs/banners within your booth number, in JPG/JPEG format. The linked content can be any size.**



Banner P1 (1150 x 3000 px)
Banner L1 (3000 x 1150 px)
TVL1 (1920 x 1080 px)

Poster L1 (1600 x 1200 px)
Poster L2 (1600 x 1200 px)
Poster L3 (1600 x 1200 px)
Poster L4 (1600 x 1200 px)

TVL2 (1920 x 1080 px)
Branding Square 4 (1000 x 1000 px)
Poster P2 (1200 x 1600 px)
Poster L4 (1600 x 1200 px)

Poster L2 (1600 x 1200 px)
Poster L3 (1600 x 1200 px)
Poster L4 (1600 x 1200 px)
Poster L5 (1600 x 1200 px)