

Small Booths On-boarding Spreadsheet

Step 1

Search Your Virtual Booth by number.

Step 2

Provide the desired content for each area following the content dimensions specified in your booth number.

For Small booths you have:

- 2 branding spaces in the walls (That you cannot link content to)
- 6 content spaces in the walls (That you can link content to)
- Up to 5 extra content between Downloads and Products (these 2 tabs are in the Burger menu)
- Up to 5 extra business cards/forms (Contacts tab in the Burger menu), the booth has 2 default contact forms, those 2 doesn't count towards your 5 business cards/forms.

*You can distribute your content (videos, links, documents, images, etc.) as you like

**The images for the content spaces in the walls have to be the exact pixel size of the posters/T-Vs/banners within your booth number, in JPG/JPEG format. The linked content can be any size.

***The image on the wall can be used as preview in the slider as well, or it can be a different image, and every content space on the wall can be linked to only one content (image, video, link, audio, document, etc.)

Types of Content:

- Images: JPG/JPEG, PNG, GIF
- Videos: MP4
- Documents: PDF, DOCX, PPTX, XLS
- Links: Websites, Webinars, Forms, etc.
- Audio: MP3
- Other downloads or packs: ZIP, RAR

Additionally, you can send:

- Email address of whom attendee questions should be sent to
- Email address of users that should be allowed to see the analytics of the booth.
- Freebies (if any. Attendees can have mailed to them. Include images/description, and email where to send the submittal)
- Raffles (if any. Include images/description, and email where to send the submittal)

Small booths have 2 content refreshes per year. You can buy extra.

Step 3

Submit your content and the form "Content Arrangement" to the Dropbox folder that will be emailed to you by Simulocity.

Small-0001



Branding Banner L1 (3000 x 1500 px)
Branding Square 1 (1000 x 1000 px)



TVL1 (1980 x 1080 px)



Poster L1 (1600 x 1200 px)
Poster L2 (1600 x 1200 px)



Poster L1 (1600 x 1200 px)
Poster L2 (1600 x 1200 px)
Poster L3 (1600 x 1200 px)

Step 1: Select your virtual booth.

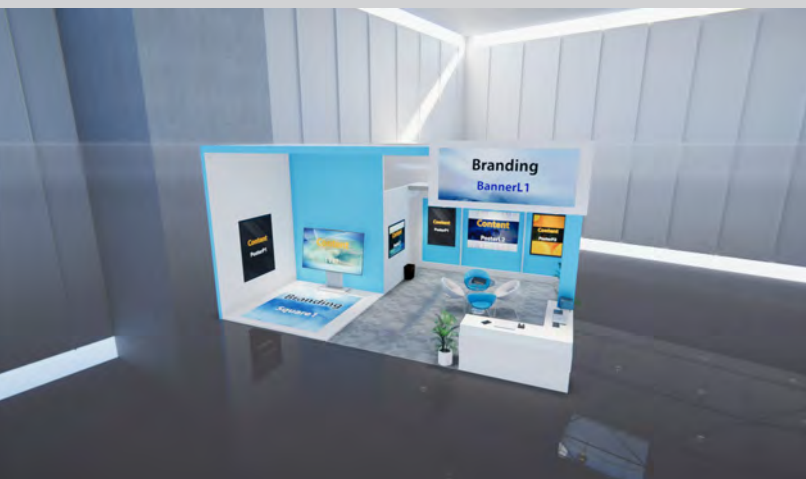
Step 2: Provide the desired content for each area following the dimensions specified below. You can choose to put any content in the interactive places such as: images, audio, videos, links, documents, etc.

Step 3: Submit your content and form to the dropbox folder that will be emailed to you by Simulocity.

***Branding cannot be linked to content.**

****The images for the content spaces in the walls have to be the exact pixel size of the posters/TVs/banners within your booth number, in JPG/JPEG format. The linked content can be any size.**

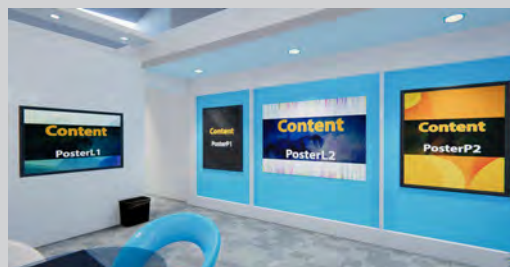
Small-0002



Branding Banner L1 (3000 x 1500 px)
Branding Square 1 (1000 x 1000 px)



Poster P1 (1200 x 1600 px)
TVL1 (1980 x 1080 px)



Poster L1 (1600 x 1200 px)
Poster L2 (1600 x 1200 px)
Poster P1 (1200 x 1600 px)
Poster P2 (1200 x 1600 px)

Step 1: Select your virtual booth.

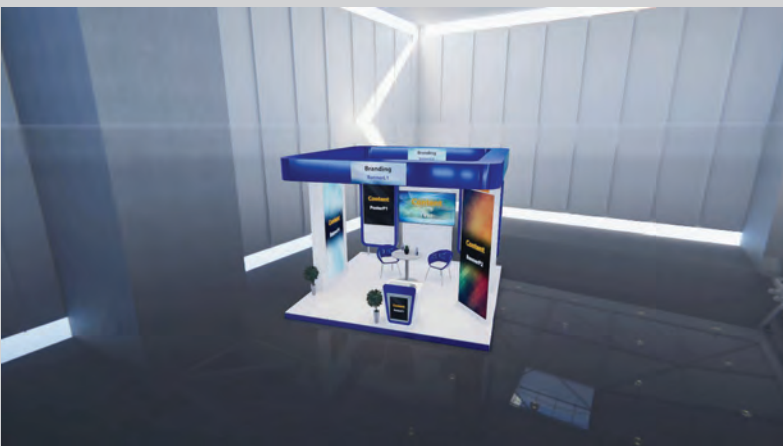
Step 2: Provide the desired content for each area following the dimensions specified below. You can choose to put any content in the interactive places such as: images, audio, videos, links, documents, etc.

Step 3: Submit your content and form to the dropbox folder that will be emailed to you by Simulocity.

***Branding cannot be linked to content.**

****The images for the content spaces in the walls have to be the exact pixel size of the posters/TVs/banners within your booth number, in JPG/JPEG format. The linked content can be any size.**

Small-0003



Branding Banner L1 (3000 x 1150 px)



Poster P1 (1200 x 1600 px)
Banner P1 (1150 x 3000 px)
Banner P2 (1150 x 3000 px)

Step 1: Select your virtual booth.

Step 2: Provide the desired content for each area following the dimensions specified below. You can choose to put any content in the interactive places such as: images, audio, videos, links, documents, etc.

Step 3: Submit your content and form to the dropbox folder that will be emailed to you by Simulocity.

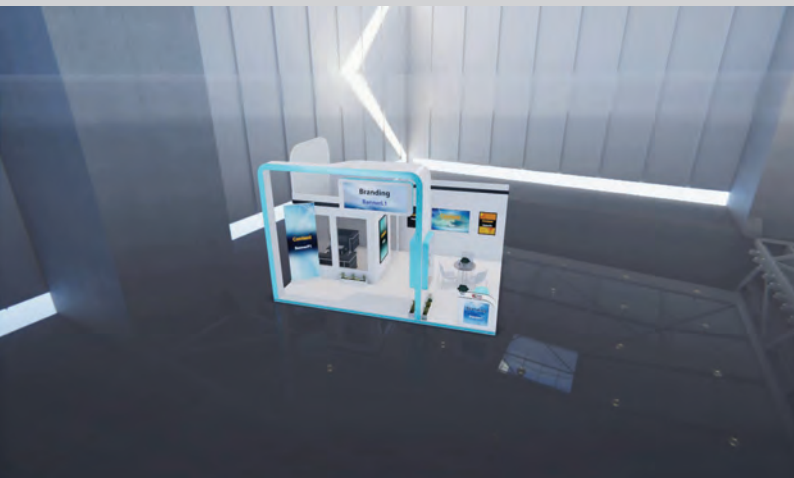
***Branding cannot be linked to content.**

****The images for the content spaces in the walls have to be the exact pixel size of the posters/TVs/banners within your booth number, in JPG/JPEG format. The linked content can be any size.**



Poster P1 (1200 x 1600 px)
Poster P2 (1200 x 1600 px)
TVL1 (1980 x 1080 px)
Branding Banner L2 (3000 x 1150 px)

Small-0004



Step 1: Select your virtual booth.

Step 2: Provide the desired content for each area following the dimensions specified below. You can choose to put any content in the interactive places such as: images, audio, videos, links, documents, etc.

Step 3: Submit your content and form to the dropbox folder that will be emailed to you by Simulocity.

***Branding cannot be linked to content.**

****The images for the content spaces in the walls have to be the exact pixel size of the posters/TVs/banners within your booth number, in JPG/JPEG format. The linked content can be any size.**

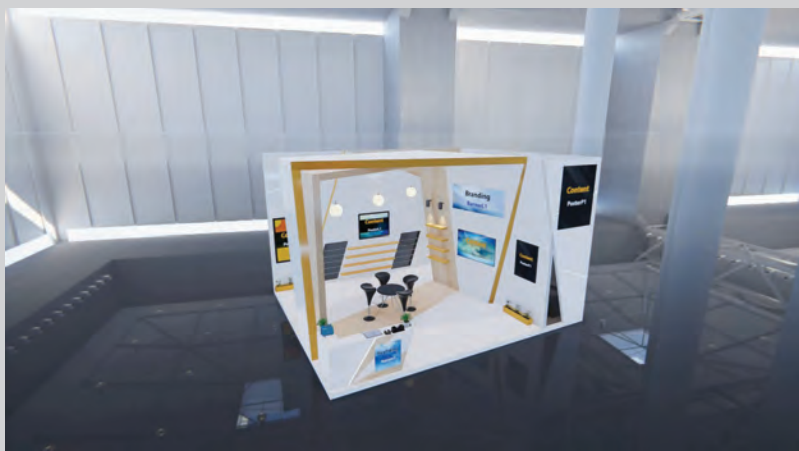


Branding Banner L1 (3000 x 1150 px)
Banner P1 (1150 x 3000 px)
Square 1 (1000 x 1000 px)
Poster P1 (1200 x 1600 px)



Poster P1 (1200 x 1600 px)
Poster P2 (1200 x 1600 px)
TVP1 (1080 x 1920 px)
TVL1 (1920 x 1080 px)

Small-0005



Step 1: Select your virtual booth.

Step 2: Provide the desired content for each area following the dimensions specified below. You can choose to put any content in the interactive places such as: images, audio, videos, links, documents, etc.

Step 3: Submit your content and form to the dropbox folder that will be emailed to you by Simulocity.

***Branding cannot be linked to content.**

****The images for the content spaces in the walls have to be the exact pixel size of the posters/TVs/banners within your booth number, in JPG/JPEG format. The linked content can be any size.**



Branding Square 1 (1000 x 1000 px)
Poster P1 (1200 x 1600 px)

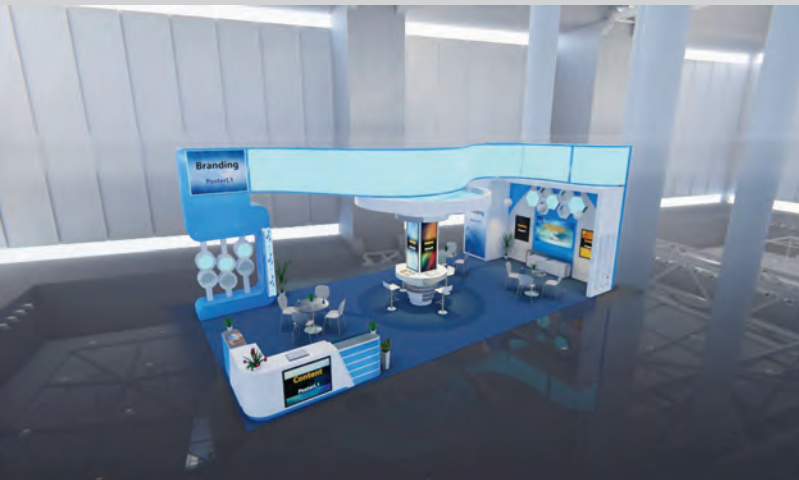


Branding Banner L1 (3000 x 1150 px)
Poster P1 (1200 x 1600 px)
TVL1 (1920 x 1080 px)



Poster P1 (1200 x 1600 px)
Poster P2 (1200 x 1600 px)
Poster L1 (1600 x 1200 px)

Small-0006



Step 1: Select your virtual booth.

Step 2: Provide the desired content for each area following the dimensions specified below. You can choose to put any content in the interactive places such as: images, audio, videos, links, documents, etc.

Step 3: Submit your content and form to the dropbox folder that will be emailed to you by Simulocity.

***Branding cannot be linked to content.**

****The images for the content spaces in the walls have to be the exact pixel size of the posters/TVs/banners within your booth number, in JPG/JPEG format. The linked content can be any size.**



Branding Banner L1 (3000 x 1150 px)
Poster L1 (1600 x 1200 px)



Banner P1 (1150 x 3000 px)
Banner P2 (1150 x 3000 px)
Branding Banner P1 (1150 x 3000 px)



Poster P1 (1200 x 1600 px)
Poster P1 (1200 x 1600 px)
TVL1 (1920 x 1080 px)

Small-0007



Step 1: Select your virtual booth.

Step 2: Provide the desired content for each area following the dimensions specified below. You can choose to put any content in the interactive places such as: images, audio, videos, links, documents, etc.

Step 3: Submit your content and form to the dropbox folder that will be emailed to you by Simulocity.

***Branding cannot be linked to content.**

****The images for the content spaces in the walls have to be the exact pixel size of the posters/TVs/banners within your booth number, in JPG/JPEG format. The linked content can be any size.**



Banner L1 (3000 x 1150 px)
Poster L1 (1600 x 1200 px)



Branding Banner L1 (3000 x 1150 px)
Poster P1 (1200 x 1600 px)
TVL1 (1920 x 1080 px)



Branding Poster L1 (1600 x 1200 px)
Poster P1 (1200 x 1600 px)
Poster P2 (1200 x 1600 px)

Small-0008



Step 1: Select your virtual booth.

Step 2: Provide the desired content for each area following the dimensions specified below. You can choose to put any content in the interactive places such as: images, audio, videos, links, documents, etc.

Step 3: Submit your content and form to the dropbox folder that will be emailed to you by Simulocity.

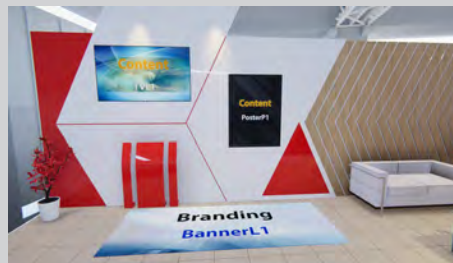
***Branding cannot be linked to content.**

****The images for the content spaces in the walls have to be the exact pixel size of the posters/TVs/banners within your booth number, in JPG/JPEG format. The linked content can be any size.**

Branding Poster L1 (1600 x 1200 px)



Poster L1 (1600 x 1200 px)



Branding Banner L1 (3000 x 1150 px)
TVL1 (1920 x 1080 px)
Poster P1 (1200 x 1600 px)



Poster L1 (1600 x 1200 px),
Poster L2 (1600 x 1200 px)
Poster P1 (1200 x 1600 px)



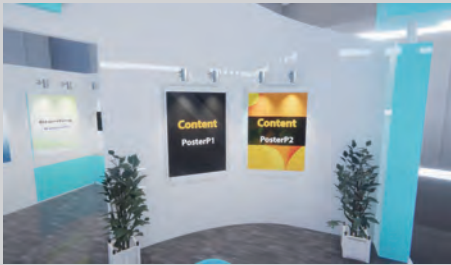
Step 1: Select your virtual booth.

Step 2: Provide the desired content for each area following the dimensions specified below. You can choose to put any content in the interactive places such as: images, audio, videos, links, documents, etc.

Step 3: Submit your content and form to the dropbox folder that will be emailed to you by Simulocity.

***Branding cannot be linked to content.**

****The images for the content spaces in the walls have to be the exact pixel size of the posters/TVs/banners within your booth number, in JPG/JPEG format. The linked content can be any size.**



Poster P1 (1200 x 1600 px)
Poster P2 (1200 x 1600 px)



Poster P3 (1200 x 1600 px)
Poster P4 (1200 x 1600 px)
TVL1 (1920 x 1080 px)



Poster P5 (1200 x 1600 px)
Branding Banner P1 (1200 x 1600 px)
Branding Banner P2 (1200 x 1600 px)



Step 1: Select your virtual booth.

Step 2: Provide the desired content for each area following the dimensions specified below. You can choose to put any content in the interactive places such as: images, audio, videos, links, documents, etc.

Step 3: Submit your content and form to the dropbox folder that will be emailed to you by Simulocity.

***Branding cannot be linked to content.**

****The images for the content spaces in the walls have to be the exact pixel size of the posters/TVs/banners within your booth number, in JPG/JPEG format. The linked content can be any size.**

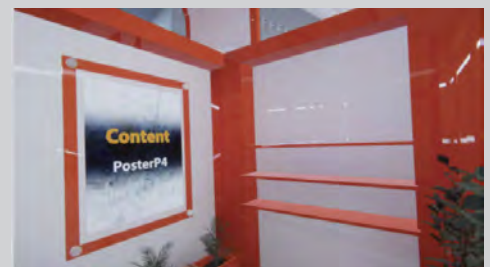
Branding Poster L1 (1200 x 1600 px)
Branding Poster L2 (1200 x 1600 px)



Poster P2 (1200 x 1600 px)
Poster P3 (1200 x 1600 px)
TVL1 (1920 x 1080 px)



Poster L1 (1600 x 1200 px)
Poster P1 (1200 x 1600 px)



Poster P4 (1200 x 1600 px)

Small-0011



Branding Banner L1 (3000 x 1150 px)

Step 1: Select your virtual booth.

Step 2: Provide the desired content for each area following the dimensions specified below. You can choose to put any content in the interactive places such as: images, audio, videos, links, documents, etc.

Step 3: Submit your content and form to the dropbox folder that will be emailed to you by Simulocity.

***Branding cannot be linked to content.**

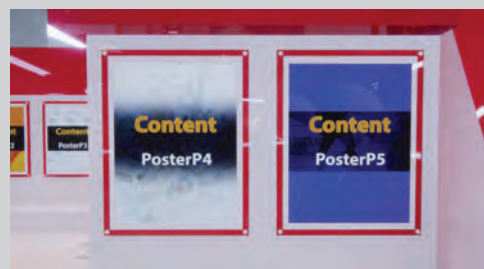
****The images for the content spaces in the walls have to be the exact pixel size of the posters/TVs/banners within your booth number, in JPG/JPEG format. The linked content can be any size.**



Branding Poster L1 (1600 x 1200 px)
Poster P1 (1200 x 1600 px)
Poster P2 (1200 x 1600 px)



Poster P3 (1200 x 1600 px)
TVL1 (1920 x 1080 px)



Poster P4 (1200 x 1600 px)
Poster P5 (1200 x 1600 px)

Small-0012



Branding Banner L1 (3000 x 1150 px)

Step 1: Select your virtual booth.

Step 2: Provide the desired content for each area following the dimensions specified below. You can choose to put any content in the interactive places such as: images, audio, videos, links, documents, etc.

Step 3: Submit your content and form to the dropbox folder that will be emailed to you by Simulocity.

***Branding cannot be linked to content.**

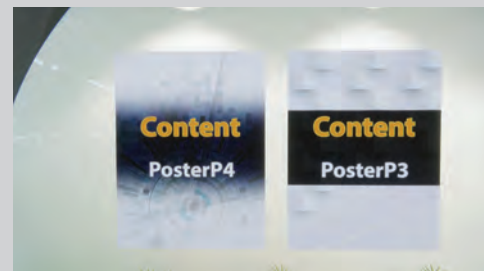
****The images for the content spaces in the walls have to be the exact pixel size of the posters/TVs/banners within your booth number, in JPG/JPEG format. The linked content can be any size.**



Poster P1 (1200 x 1600 px)
Poster P2 (1200 x 1600 px)



Banner P1 (1150 x 3000 px)
Branding Banner P2 (1150 x 3000 px)
TVL1 (1920 x 1080 px)



Poster P4 (1200 x 1600 px)
Poster P3 (1200 x 1600 px)

Small-0013



Branding Square 1 (1000 x 1000 px)
Branding Banner L1 (3000 x 1150 px)



Banner P1 (1150 x 3000 px)



Poster L1 (1600 x 1200 px)
Poster L2 (1600 x 1200 px)
Poster L3 (1600 x 1200 px)



Banner P1 (1150 x 3000 px)
TVL1 (1920 x 1080 px)

Step 1: Select your virtual booth.

Step 2: Provide the desired content for each area following the dimensions specified below. You can choose to put any content in the interactive places such as: images, audio, videos, links, documents, etc.

Step 3: Submit your content and form to the dropbox folder that will be emailed to you by Simulocity.

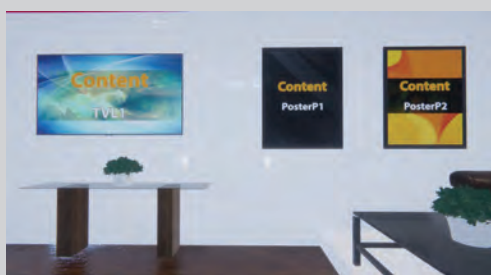
***Branding cannot be linked to content.**

****The images for the content spaces in the walls have to be the exact pixel size of the posters/TVs/banners within your booth number, in JPG/JPEG format. The linked content can be any size.**

Small-0014



Branding Poster L1 (1600 x 1200 px)
Banner P1 (1150 x 3000 px)
Poster L1 (1600 x 1200 px)



TVL1 (1920 x 1080 px)
Poster P1 (1200 x 1600 px)
Poster P2 (1200 x 1600 px)



Poster L2 (1200 x 1600 px)
Branding Poster L2 (1200 x 1600 px)

Step 1: Select your virtual booth.

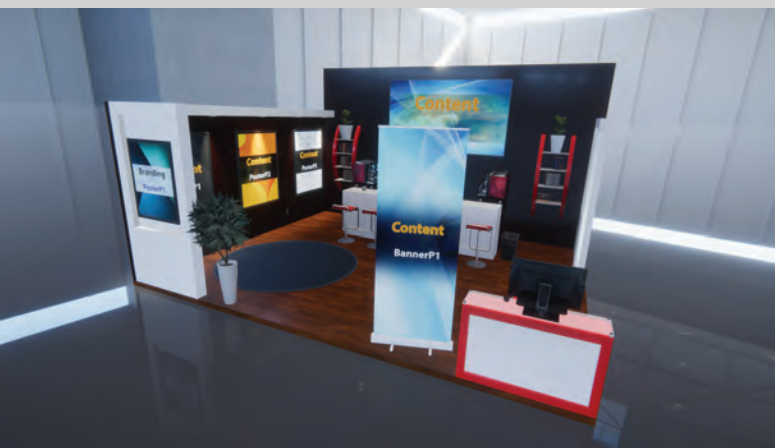
Step 2: Provide the desired content for each area following the dimensions specified below. You can choose to put any content in the interactive places such as: images, audio, videos, links, documents, etc.

Step 3: Submit your content and form to the dropbox folder that will be emailed to you by Simulocity.

***Branding cannot be linked to content.**

****The images for the content spaces in the walls have to be the exact pixel size of the posters/TVs/banners within your booth number, in JPG/JPEG format. The linked content can be any size.**

Small-0015



Branding Poster P1 (1200 x 1600 px)

Step 1: Select your virtual booth.

Step 2: Provide the desired content for each area following the dimensions specified below. You can choose to put any content in the interactive places such as: images, audio, videos, links, documents, etc.

Step 3: Submit your content and form to the dropbox folder that will be emailed to you by Simulocity.

***Branding cannot be linked to content.**

****The images for the content spaces in the walls have to be the exact pixel size of the posters/TVs/banners within your booth number, in JPG/JPEG format. The linked content can be any size.**



Banner P1 (1150 x 3000 px)



Poster P1 (1200 x 1600 px)
Poster P2 (1200 x 1600 px)
Poster P3 (1200 x 1600 px)

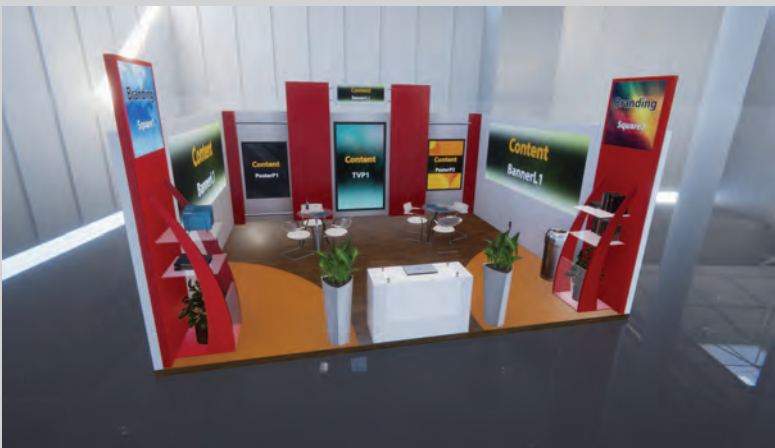


TVL1 (1920 x 1080 px)



Banner P1 (1150 x 3000 px)
Branding Poster P2 (1200 x 1600 px)

Small-0016



Branding Square 1 (1000 x 1000 px)
Branding Square 2 (1000 x 1000 px)

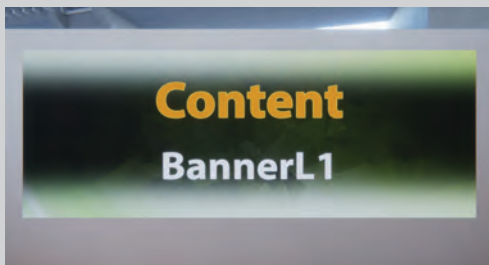
Step 1: Select your virtual booth.

Step 2: Provide the desired content for each area following the dimensions specified below. You can choose to put any content in the interactive places such as: images, audio, videos, links, documents, etc.

Step 3: Submit your content and form to the dropbox folder that will be emailed to you by Simulocity.

***Branding cannot be linked to content.**

****The images for the content spaces in the walls have to be the exact pixel size of the posters/TVs/banners within your booth number, in JPG/JPEG format. The linked content can be any size.**



Banner L1 (3000 x 1150 px)



Poster P1 (1200 x 1600 px)
Poster P2 (1200 x 1600 px)
TVP1 (1080 x 1920 px)
Banner L1 (3000 x 1150 px)



Banner L1 (3000 x 1150 px)

Small-0017



Branding Poster L1 (1600 x 1200 px)
Branding Poster L2 (1600 x 1200 px)



Poster P1 (1200 x 1600 px)
Poster P2 (1200 x 1600 px)



Poster P1 (1200 x 1600 px)
Poster P2 (1200 x 1600 px)



TVL1 (1920 x 1080 px)
Banner P1 (1150 x 3000 px)

Step 1: Select your virtual booth.

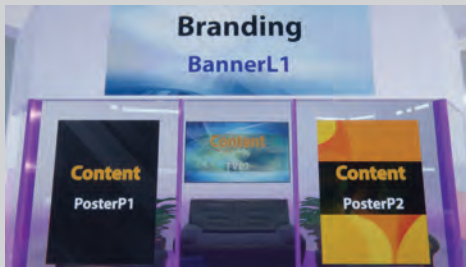
Step 2: Provide the desired content for each area following the dimensions specified below. You can choose to put any content in the interactive places such as: images, audio, videos, links, documents, etc.

Step 3: Submit your content and form to the dropbox folder that will be emailed to you by Simulocity.

***Branding cannot be linked to content.**

****The images for the content spaces in the walls have to be the exact pixel size of the posters/TVs/banners within your booth number, in JPG/JPEG format. The linked content can be any size.**

Small-0018



Branding Banner L1 (3000 x 1150 px)
Poster P1 (1200 x 1600 px)
Poster P2 (1200 x 1600 px)
TVL1 (1920 x 1080 px)



Poster P4 (1200 x 1600 px)
Banner P2 (1150 x 3000 px)



Branding Poster P1 (1200 x 1600 px)
Banner P1 (1150 x 3000 px)

Step 1: Select your virtual booth.

Step 2: Provide the desired content for each area following the dimensions specified below. You can choose to put any content in the interactive places such as: images, audio, videos, links, documents, etc.

Step 3: Submit your content and form to the dropbox folder that will be emailed to you by Simulocity.

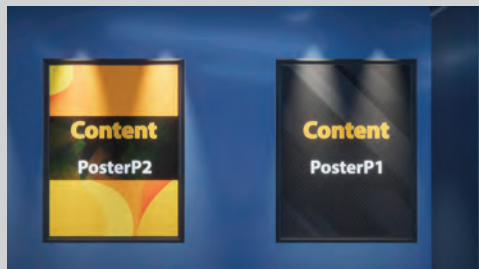
***Branding cannot be linked to content.**

****The images for the content spaces in the walls have to be the exact pixel size of the posters/TVs/banners within your booth number, in JPG/JPEG format. The linked content can be any size.**

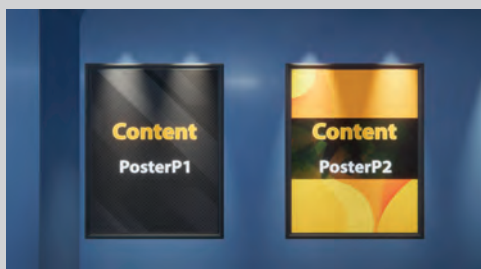
Small-0019



Branding Banner L1 (3000 x 1150 px)
Branding Square 1 (1000 x 1000 px)



Poster P2 (1200 x 1600 px)
Poster P1 (1200 x 1600 px)



Poster P1 (1200 x 1600 px)
Poster P2 (1200 x 1600 px)



TVL1 (1920 x 1080 px)
Banner P1 (1150 x 3000 px)

Step 1: Select your virtual booth.

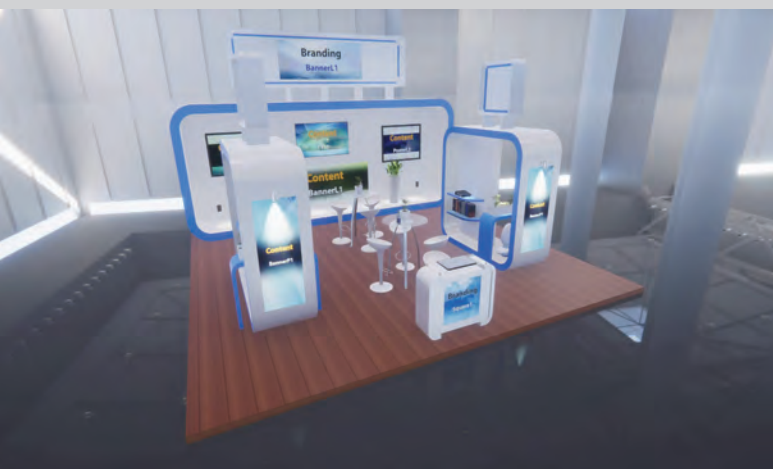
Step 2: Provide the desired content for each area following the dimensions specified below. You can choose to put any content in the interactive places such as: images, audio, videos, links, documents, etc.

Step 3: Submit your content and form to the dropbox folder that will be emailed to you by Simulocity.

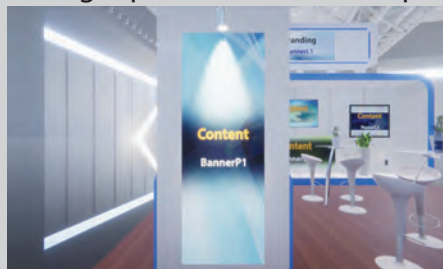
***Branding cannot be linked to content.**

****The images for the content spaces in the walls have to be the exact pixel size of the posters/TVs/banners within your booth number, in JPG/JPEG format. The linked content can be any size.**

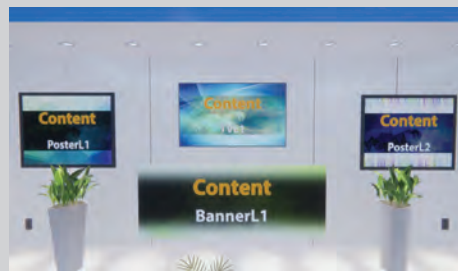
Small-0020



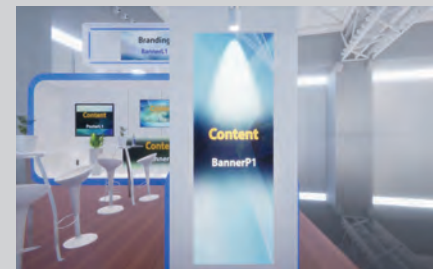
Branding Banner L1 (3000 x 1150 px)
Branding Square 1 (1000 x 1000 px)



Banner P1 (1150 x 3000 px)



Poster L1 (1600 x 1200 px)
Poster L2 (1600 x 1200 px)
Banner L1 (3000 x 1150 px)
TVL1 (1920 x 1080 px)



Banner P1 (1150 x 3000 px)

Step 1: Select your virtual booth.

Step 2: Provide the desired content for each area following the dimensions specified below. You can choose to put any content in the interactive places such as: images, audio, videos, links, documents, etc.

Step 3: Submit your content and form to the dropbox folder that will be emailed to you by Simulocity.

***Branding cannot be linked to content.**

****The images for the content spaces in the walls have to be the exact pixel size of the posters/TVs/banners within your booth number, in JPG/JPEG format. The linked content can be any size.**

Small-0021



- Step 1: Select your virtual booth.
- Step 2: Provide the desired content for each area following the dimensions specified below. You can choose to put any content in the interactive places such as: images, audio, videos, links, documents, etc.
- Step 3: Submit your content and form to the dropbox folder that will be emailed to you by Simulocity.

***Branding cannot be linked to content.**
****The images for the content spaces in the walls have to be the exact pixel size of the posters/TVs/banners within your booth number, in JPG/JPEG format. The linked content can be any size.**

Branding Banner L1 (3000 x 1150 px)
 Branding Banner L2 (3000 x 1150 px)



Poster P1 (1200 x 1600 px)



TVL1 (1920 x 1080 px)
 Poster P1 (1200 x 1600 px)
 Banner P1 (1150 x 3000 px)



TVL1 (1920 x 1080 px)
 Banner P1 (1150 x 3000 px)

Small-0022



- Step 1: Select your virtual booth.
- Step 2: Provide the desired content for each area following the dimensions specified below. You can choose to put any content in the interactive places such as: images, audio, videos, links, documents, etc.
- Step 3: Submit your content and form to the dropbox folder that will be emailed to you by Simulocity.

***Branding cannot be linked to content.**
****The images for the content spaces in the walls have to be the exact pixel size of the posters/TVs/banners within your booth number, in JPG/JPEG format. The linked content can be any size.**

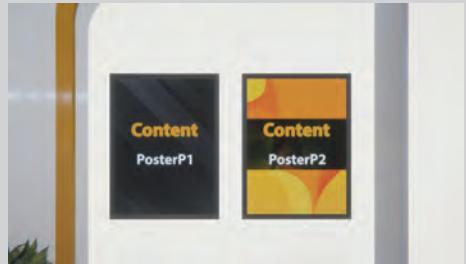
Branding Banner L1 (3000 x 1150 px)
 Branding Poster P1 (1200 x 1600 px)



Poster P3 (1200 x 1600 px)
 Poster P4 (1200 x 1600 px)
 Banner P1 (1150 x 3000 px)



TVL1 (1920 x 1080 px)

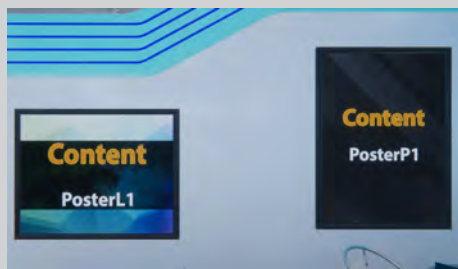


Poster P1 (1200 x 1600 px)
 Poster P2 (1200 x 1600 px)

Small-0023



Branding Banner L1 (3000 x 1150 px)



Poster L1 (1600 x 1200 px)
Poster P1 (1200 x 1600 px)



Banner L1 (3000 x 1150 px)
Banner L2 (3000 x 1150 px)
Branding Banner L2 (3000 x 1150 px)
TVL1 (1920 x 1080 px)



Banner P1 (1150 x 3000 px)

Step 1: Select your virtual booth.

Step 2: Provide the desired content for each area following the dimensions specified below. You can choose to put any content in the interactive places such as: images, audio, videos, links, documents, etc.

Step 3: Submit your content and form to the dropbox folder that will be emailed to you by Simulocity.

***Branding cannot be linked to content.**

****The images for the content spaces in the walls have to be the exact pixel size of the posters/TVs/banners within your booth number, in JPG/JPEG format. The linked content can be any size.**

Small-0024



Branding Poster L1 (1600 x 1200 px)



Banner P1 (1150 x 3000 px)
Poster P4 (1200 x 1600 px)
Branding Poster L2 (1600 x 1200 px)



Poster P1 (1200 x 1600 px)
Poster P2 (1200 x 1600 px)
Poster P3 (1200 x 1600 px)



TVL1 (1920 x 1080 px)

Step 1: Select your virtual booth.

Step 2: Provide the desired content for each area following the dimensions specified below. You can choose to put any content in the interactive places such as: images, audio, videos, links, documents, etc.

Step 3: Submit your content and form to the dropbox folder that will be emailed to you by Simulocity.

***Branding cannot be linked to content.**

****The images for the content spaces in the walls have to be the exact pixel size of the posters/TVs/banners within your booth number, in JPG/JPEG format. The linked content can be any size.**

Small-0025



Step 1: Select your virtual booth.

Step 2: Provide the desired content for each area following the dimensions specified below. You can choose to put any content in the interactive places such as: images, audio, videos, links, documents, etc.

Step 3: Submit your content and form to the dropbox folder that will be emailed to you by Simulocity.

***Branding cannot be linked to content.**

****The images for the content spaces in the walls have to be the exact pixel size of the posters/TVs/banners within your booth number, in JPG/JPEG format. The linked content can be any size.**

Branding Banner L1 (3000 x 1150 px)
Branding Poster P1 (1200 x 1600 px)



Banner P1 (1150 x 3000 px)
TVL1 (1920 x 1080 px)



Poster P1 (1200 x 1600 px)
Poster P2 (1200 x 1600 px)



Poster P1 (1200 x 1600 px)
Banner P1 (1150 x 3000 px)

Small-0026



Step 1: Select your virtual booth.

Step 2: Provide the desired content for each area following the dimensions specified below. You can choose to put any content in the interactive places such as: images, audio, videos, links, documents, etc.

Step 3: Submit your content and form to the dropbox folder that will be emailed to you by Simulocity.

***Branding cannot be linked to content.**

****The images for the content spaces in the walls have to be the exact pixel size of the posters/TVs/banners within your booth number, in JPG/JPEG format. The linked content can be any size.**



Branding Poster L1 (1600 x 1200 px)
Poster P1 (1200 x 1600 px)
Poster P2 (1200 x 1600 px)



Branding Banner L1 (3000 x 1150 px)
Banner L1 (3000 x 1150 px)
Banner P1 (1150 x 3000 px)
Banner P2 (1150 x 3000 px)



TVL1 (1920 x 1080 px)

Small-0027



Branding Banner L1 (3000 x 1150 px)
Branding Square 1 (1000 x 1000 px)

Step 1: Select your virtual booth.

Step 2: Provide the desired content for each area following the dimensions specified below. You can choose to put any content in the interactive places such as: images, audio, videos, links, documents, etc.

Step 3: Submit your content and form to the dropbox folder that will be emailed to you by Simulocity.

***Branding cannot be linked to content.**

****The images for the content spaces in the walls have to be the exact pixel size of the posters/TVs/banners within your booth number, in JPG/JPEG format. The linked content can be any size.**



Banner P1 (1150 x 3000 px)

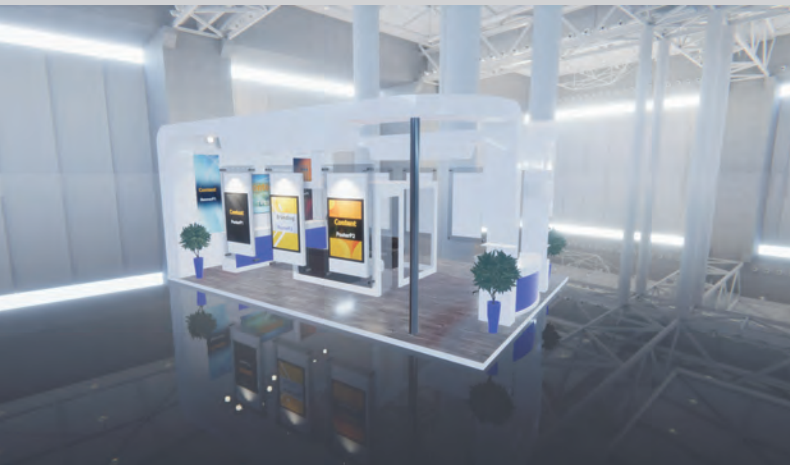


TVL1 (1920 x 1080 px)
Poster P1 (1200 x 1600 px)



Poster P1 (1200 x 1600 px)
TVP1 (1080 x 1920 px)
Poster L1 (1600 x 1200 px)

Small-0028



Step 1: Select your virtual booth.

Step 2: Provide the desired content for each area following the dimensions specified below. You can choose to put any content in the interactive places such as: images, audio, videos, links, documents, etc.

Step 3: Submit your content and form to the dropbox folder that will be emailed to you by Simulocity.

***Branding cannot be linked to content.**

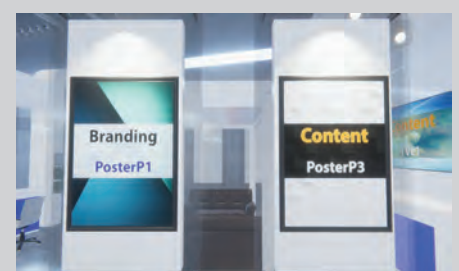
****The images for the content spaces in the walls have to be the exact pixel size of the posters/TVs/banners within your booth number, in JPG/JPEG format. The linked content can be any size.**



Poster P1 (1200 x 1600 px)
Branding Poster P2 (1200 x 1600 px)
Poster P2 (1200 x 1600 px)



Banner P1 (1150 x 3000 px)
Banner P2 (1150 x 3000 px)
TVL1 (1920 x 1080 px)



Branding Poster P1 (1200 x 1600 px)
Poster P3 (1200 x 1600 px)

Small-0029



Step 1: Select your virtual booth.

Step 2: Provide the desired content for each area following the dimensions specified below. You can choose to put any content in the interactive places such as: images, audio, videos, links, documents, etc.

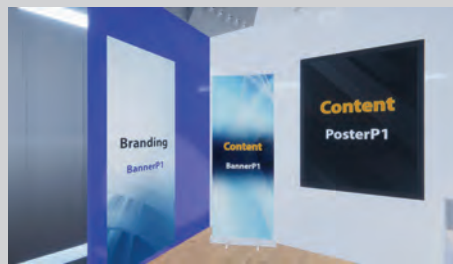
Step 3: Submit your content and form to the dropbox folder that will be emailed to you by Simulocity.

***Branding cannot be linked to content.**

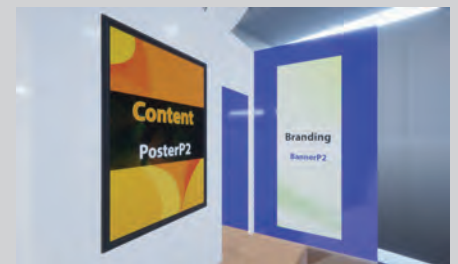
****The images for the content spaces in the walls have to be the exact pixel size of the posters/TVs/banners within your booth number, in JPG/JPEG format. The linked**



Poster L1 (1600 x 1200 px)
Poster L2 (1600 x 1200 px)
TVL1 (1920 x 1080 px)

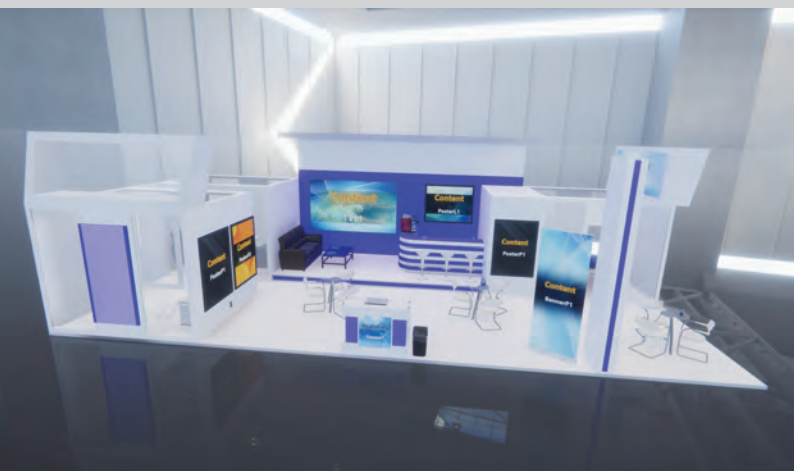


Banner P1 (1150 x 3000 px)
Branding Banner P1 (1150 x 3000 px)
Poster P1 (1200 x 1600 px)



Poster P2 (1200 x 1600 px)
Branding Banner P2 (1150 x 3000 px)

Small-0030



Branding Square 1 (1000 x 1000 px)

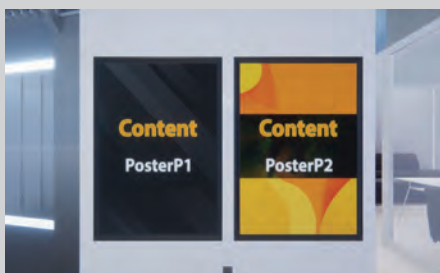
Step 1: Select your virtual booth.

Step 2: Provide the desired content for each area following the dimensions specified below. You can choose to put any content in the interactive places such as: images, audio, videos, links, documents, etc.

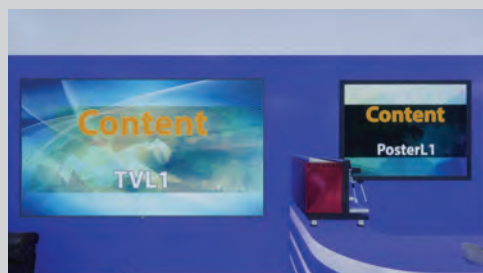
Step 3: Submit your content and form to the dropbox folder that will be emailed to you by Simulocity.

***Branding cannot be linked to content.**

****The images for the content spaces in the walls have to be the exact pixel size of the posters/TVs/banners within your booth number, in JPG/JPEG format. The linked content can be any size.**



Poster P1 (1200 x 1600 px)
Poster P2 (1200 x 1600 px)



TVL1 (1920 x 1080 px)
Poster L1 (1600 x 1200 px)



Poster P1 (1200 x 1600 px)
Banner P1 (1150 x 3000 px)
Branding Banner L1 (3000 x 1150 px)

Small-0031



Step 1: Select your virtual booth.

Step 2: Provide the desired content for each area following the dimensions specified below. You can choose to put any content in the interactive places such as: images, audio, videos, links, documents, etc.

Step 3: Submit your content and form to the dropbox folder that will be emailed to you by Simulocity.

***Branding cannot be linked to content.**

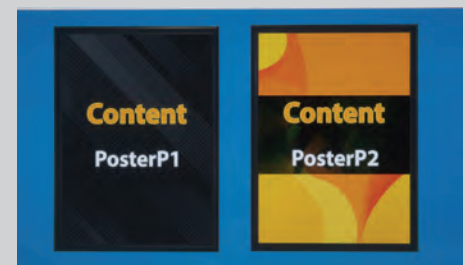
****The images for the content spaces in the walls have to be the exact pixel size of the posters/TVs/banners within your booth number, in JPG/JPEG format. The linked content can be any size.**



Branding Banner L1 (1150 x 3000 px)
Poster L3 (1600 x 1200 px)

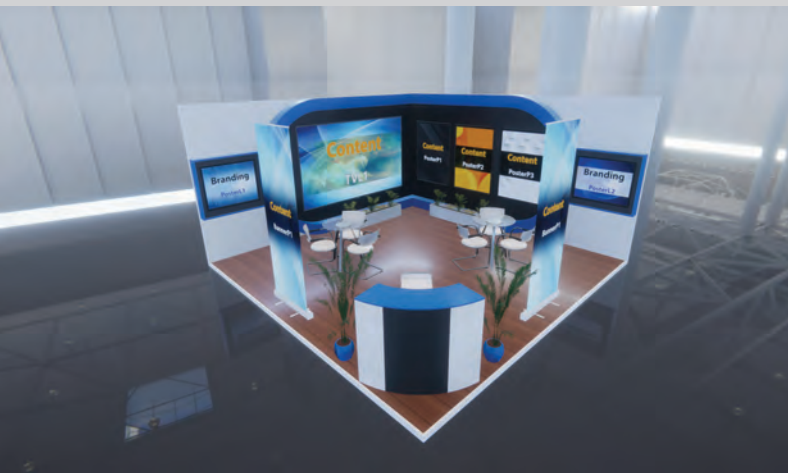


Poster L1 (1600 x 1200 px)
Poster L2 (1600 x 1200 px)
Branding Poster L1 (1600 x 1200 px)
TVL1 (1920 x 1080 px)



Poster P1 (1200 x 1600 px)
Poster P2 (1200 x 1600 px)

Small-0032



Step 1: Select your virtual booth.

Step 2: Provide the desired content for each area following the dimensions specified below. You can choose to put any content in the interactive places such as: images, audio, videos, links, documents, etc.

Step 3: Submit your content and form to the dropbox folder that will be emailed to you by Simulocity.

***Branding cannot be linked to content.**

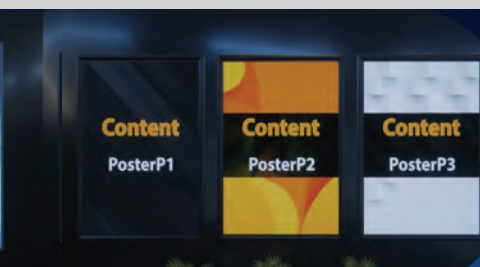
****The images for the content spaces in the walls have to be the exact pixel size of the posters/TVs/banners within your booth number, in JPG/JPEG format. The linked content can be any size.**



Branding Poster L1 (1600 x 1200 px)
Banner P1 (1150 x 3000 px)



TVL1 (1920 x 1080 px)



Poster P1 (1200 x 1600 px)
Poster P2 (1200 x 1600 px)
Poster P3 (1200 x 1600 px)



Banner P1 (1150 x 3000 px)
Branding Poster L2 (1600 x 1200 px)

Small-0033



Branding Banner L1 (3000 x 1150 px)
Branding Poster P1 (1200 x 1600 px)

Step 1: Select your virtual booth.
Step 2: Provide the desired content for each area following the dimensions specified below. You can choose to put any content in the interactive places such as: images, audio, videos, links, documents, etc.
Step 3: Submit your content and form to the dropbox folder that will be emailed to you by Simulocity.

***Branding cannot be linked to content.**
****The images for the content spaces in the walls have to be the exact pixel size of the posters/TVs/banners within your booth number, in JPG/JPEG format. The linked content can be any size.**



Poster P1 (1200 x 1600 px)



Banner L1 (3000 x 1150 px)
TVL1 (1920 x 1080 px)



Poster P1 (1200 x 1600 px)
Poster P2 (1200 x 1600 px)
Banner L1 (3000 x 1150 px)

Small-0034



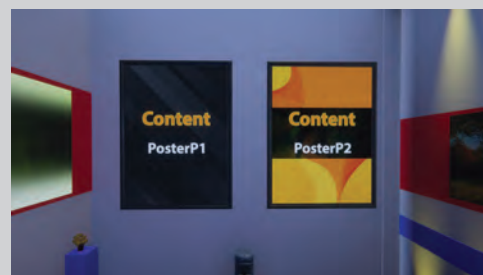
Branding Poster P1 (1200 x 1600 px)
Branding Square 1 (1000 x 1000 px)

Step 1: Select your virtual booth.
Step 2: Provide the desired content for each area following the dimensions specified below. You can choose to put any content in the interactive places such as: images, audio, videos, links, documents, etc.
Step 3: Submit your content and form to the dropbox folder that will be emailed to you by Simulocity.

***Branding cannot be linked to content.**
****The images for the content spaces in the walls have to be the exact pixel size of the posters/TVs/banners within your booth number, in JPG/JPEG format. The linked content can be any size.**



Poster P1 (1200 x 1600 px)
TVL1 (1920 x 1080 px)
Banner L1 (3000 x 1150 px)

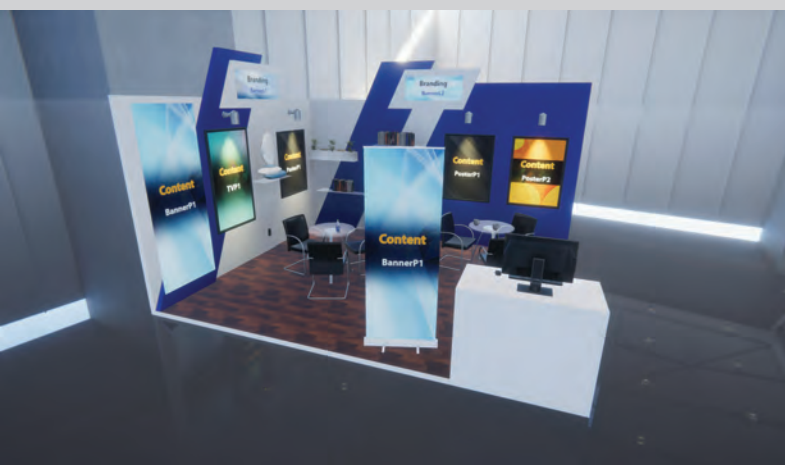


Poster P1 (1200 x 1600 px)
Poster P2 (1200 x 1600 px)



Poster P1 (1200 x 1600 px)

Small-0035



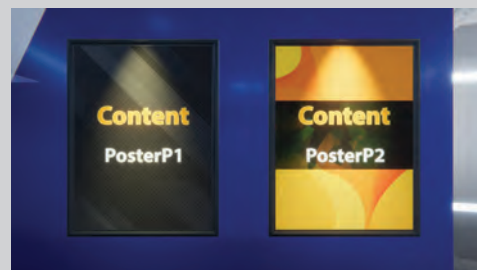
Branding Banner L1 (3000 x 1150 px)
Branding Banner L2 (3000 x 1150 px)



Banner P1 (1150 x 3000 px)



Banner P1 (1150 x 3000 px)
TVP1 (1080 x 1920 px)
Poster P1 (1200 x 1600 px)



Poster P1 (1200 x 1600 px)
Poster P2 (1200 x 1600 px)

Step 1: Select your virtual booth.

Step 2: Provide the desired content for each area following the dimensions specified below. You can choose to put any content in the interactive places such as: images, audio, videos, links, documents, etc.

Step 3: Submit your content and form to the dropbox folder that will be emailed to you by Simulocity.

***Branding cannot be linked to content.**

****The images for the content spaces in the walls have to be the exact pixel size of the posters/TVs/banners within your booth number, in JPG/JPEG format. The linked content can be any size.**

Small-0036



Branding Banner L1 (3000 x 1150 px)
Branding Banner L2 (3000 x 1150 px)



Poster L1 (1600 x 1200 px)



Poster P1 (1200 x 1600 px)
Poster P2 (1200 x 1600 px)
TVL1 (1920 x 1080 px)

Step 1: Select your virtual booth.

Step 2: Provide the desired content for each area following the dimensions specified below. You can choose to put any content in the interactive places such as: images, audio, videos, links, documents, etc.

Step 3: Submit your content and form to the dropbox folder that will be emailed to you by Simulocity.

***Branding cannot be linked to content.**

****The images for the content spaces in the walls have to be the exact pixel size of the posters/TVs/banners within your booth number, in JPG/JPEG format. The linked content can be any size.**



TVP1 (1080 x 1920 px)



Banner L1 (3000 x 1150 px)

Small-0037



Branding Poster L1 (1600 x 1200 px)
Branding Square 1 (1000 x 1000 px)

Step 1: Select your virtual booth.

Step 2: Provide the desired content for each area following the dimensions specified below. You can choose to put any content in the interactive places such as: images, audio, videos, links, documents, etc.

Step 3: Submit your content and form to the dropbox folder that will be emailed to you by Simulocity.

***Branding cannot be linked to content.**

****The images for the content spaces in the walls have to be the exact pixel size of the posters/TVs/banners within your booth number, in JPG/JPEG format. The linked content can be any size.**



TVL1 (1920 x 1080 px)
Poster P1 (1200 x 1600 px)

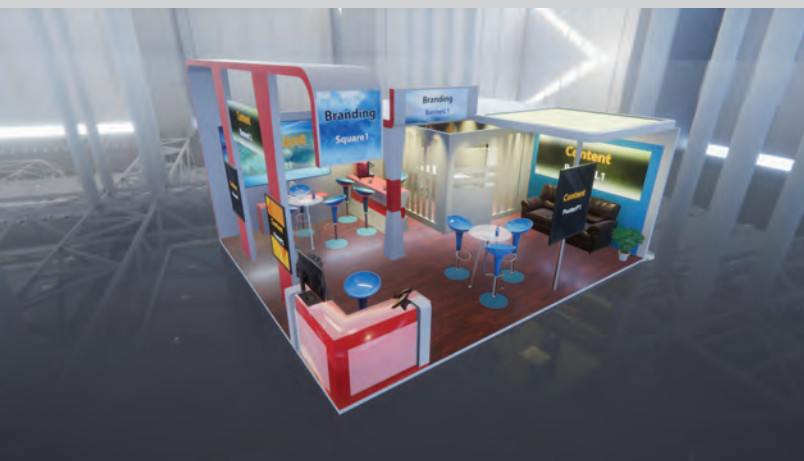


Banner P1 (1150 x 3000 px)
Banner P2 (1150 x 3000 px)



Banner P1 (1150 x 3000 px)
Banner P2 (1150 x 3000 px)

Small-0038



Branding Square 1 (1000 x 1000 px)
Branding Banner L1 (3000 x 1150 px)

Step 1: Select your virtual booth.

Step 2: Provide the desired content for each area following the dimensions specified below. You can choose to put any content in the interactive places such as: images, audio, videos, links, documents, etc.

Step 3: Submit your content and form to the dropbox folder that will be emailed to you by Simulocity.

***Branding cannot be linked to content.**

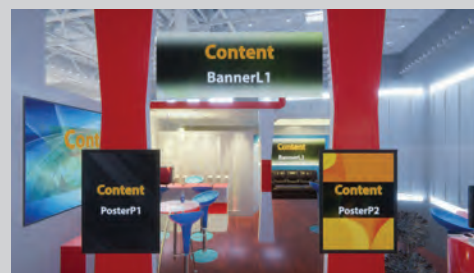
****The images for the content spaces in the walls have to be the exact pixel size of the posters/TVs/banners within your booth number, in JPG/JPEG format. The linked content can be any size.**



Poster P1 (1200 x 1600 px)
Banner L1 (3000 x 1150 px)



TVL1 (1920 x 1080 px)



Poster P1 (1200 x 1600 px)
Poster P2 (1200 x 1600 px)
Banner L1 (3000 x 1150 px)

Small-0039



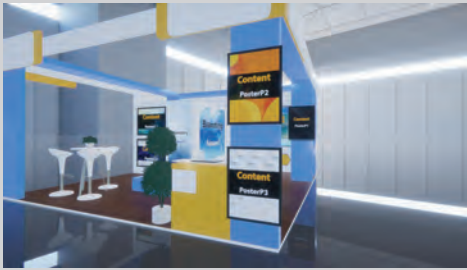
Step 1: Select your virtual booth.

Step 2: Provide the desired content for each area following the dimensions specified below. You can choose to put any content in the interactive places such as: images, audio, videos, links, documents, etc.

Step 3: Submit your content and form to the dropbox folder that will be emailed to you by Simulocity.

***Branding cannot be linked to content.**

****The images for the content spaces in the walls have to be the exact pixel size of the posters/TVs/banners within your booth number, in JPG/JPEG format. The linked**



Poster P1 (1200 x 1600 px)
Poster P2 (1200 x 1600 px)



Branding Square 1 (1000 x 1000 px)
TVL1 (1920 x 1080 px)
Poster P1 (1200 x 1600 px)



Poster L1 (1600 x 1200 px)
Poster L2 (1600 x 1200 px)
Branding Banner P1 (1150 x 3000 px)

Small-0040



Step 1: Select your virtual booth.

Step 2: Provide the desired content for each area following the dimensions specified below. You can choose to put any content in the interactive places such as: images, audio, videos, links, documents, etc.

Step 3: Submit your content and form to the dropbox folder that will be emailed to you by Simulocity.

***Branding cannot be linked to content.**

****The images for the content spaces in the walls have to be the exact pixel size of the posters/TVs/banners within your booth number, in JPG/JPEG format. The linked content can be any size.**



Poster P1 (1200 x 1600 px)
Branding Poster P1 (1200 x 1600 px)
Poster P2 (1200 x 1600 px)



Poster P3 (1200 x 1600 px)
Poster P4 (1200 x 1600 px)
Poster L1 (1600 x 1200 px)



TVL1 (1920 x 1080 px)
Branding Poster L1 (1600 x 1200 px)

Small-0041



Step 1: Select your virtual booth.

Step 2: Provide the desired content for each area following the dimensions specified below. You can choose to put any content in the interactive places such as: images, audio, videos, links, documents, etc.

Step 3: Submit your content and form to the dropbox folder that will be emailed to you by Simulocity.

***Branding cannot be linked to content.**

****The images for the content spaces in the walls have to be the exact pixel size of the posters/TVs/banners within your booth number, in JPG/JPEG format. The linked content can be any size.**



Branding Banner P1 (1150 x 3000 px)
Branding Banner P2 (1150 x 3000 px)
Banner P2 (1150 x 3000 px)



Poster P1 (1200 x 1600 px)
Banner P1 (1150 x 3000 px)
Poster P2 (1200 x 1600 px)



Poster L1 (1600 x 1200 px)
TVL1 (1920 x 1080 px)

Small-0042



Step 1: Select your virtual booth.

Step 2: Provide the desired content for each area following the dimensions specified below. You can choose to put any content in the interactive places such as: images, audio, videos, links, documents, etc.

Step 3: Submit your content and form to the dropbox folder that will be emailed to you by Simulocity.

***Branding cannot be linked to content.**

****The images for the content spaces in the walls have to be the exact pixel size of the posters/TVs/banners within your booth number, in JPG/JPEG format. The linked content can be any size.**



Poster L1 (1600 x 1200 px)
Banner P1 (1150 x 3000 px)

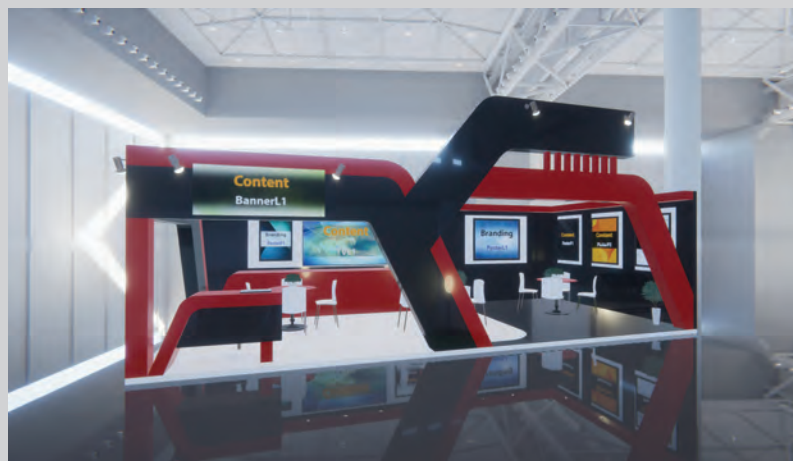


Banner P1 (1150 x 3000 px)
Banner P2 (1150 x 3000 px)



TVL1 (1920 x 1080 px)
Poster P1 (1200 x 1600 px)
Branding Poster P1 (1200 x 1600 px)
Poster P2 (1200 x 1600 px)

Small-0043



Step 1: Select your virtual booth.

Step 2: Provide the desired content for each area following the dimensions specified below. You can choose to put any content in the interactive places such as: images, audio, videos, links, documents, etc.

Step 3: Submit your content and form to the dropbox folder that will be emailed to you by Simulocity.

***Branding cannot be linked to content.**

****The images for the content spaces in the walls have to be the exact pixel size of the posters/TVs/banners within your booth number, in JPG/JPEG format. The linked content can be any size.**



Banner L1 (3000 x 1150 px)



Branding Poster L1 (1600 x 1200 px)
Poster P1 1200 x 1600 px
Poster P2 1200 x 1600 px
Poster P3 (1200 x 1600 px)



Branding Poster P1 (1200 x 1600 px)
TVL1 (1920 x 1080 px)
Poster P4 (1200 x 1600 px)

Small-0044



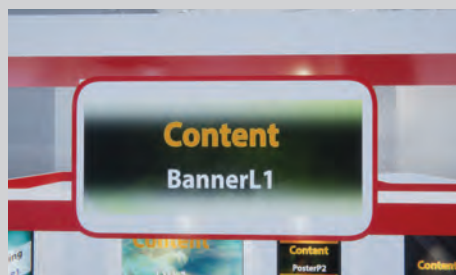
Step 1: Select your virtual booth.

Step 2: Provide the desired content for each area following the dimensions specified below. You can choose to put any content in the interactive places such as: images, audio, videos, links, documents, etc.

Step 3: Submit your content and form to the dropbox folder that will be emailed to you by Simulocity.

***Branding cannot be linked to content.**

****The images for the content spaces in the walls have to be the exact pixel size of the posters/TVs/banners within your booth number, in JPG/JPEG format. The linked content can be any size.**



Banner L1 (3000 x 1150 px)



Poster P1 (1200 x 1600 px)
Poster P2 (1200 x 1600 px)
Branding Poster L1 (1600 x 1200 px)



Poster L1 (1600 x 1200 px)
Poster L2 (1600 x 1200 px)
Branding Poster P1 (1200 x 1600 px)
TVL1 (1920 x 1080 px)

Small-0045



Branding Square 1 (1000 x 1000 px)
Branding Square 2 (1000 x 1000 px)

Step 1: Select your virtual booth.

Step 2: Provide the desired content for each area following the dimensions specified below. You can choose to put any content in the interactive places such as: images, audio, videos, links, documents, etc.

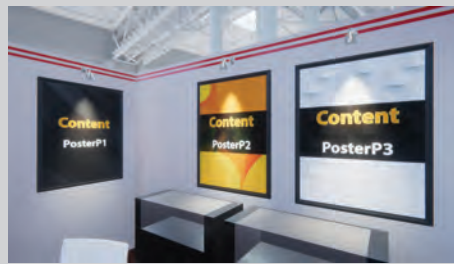
Step 3: Submit your content and form to the dropbox folder that will be emailed to you by Simulocity.

***Branding cannot be linked to content.**

****The images for the content spaces in the walls have to be the exact pixel size of the posters/TVs/banners within your booth number, in JPG/JPEG format. The linked content can be any size.**



Banner P1 (1150 x 3000 px)
TVL1 (1920 x 1080 px)



Poster P1 (1200 x 1600 px)
Poster P2 (1200 x 1600 px)
Poster P3 (1200 x 1600 px)



Banner P1 (1150 x 3000 px)

Small-0046



Branding Banner L1 (3000 x 1150 px)

Step 1: Select your virtual booth.

Step 2: Provide the desired content for each area following the dimensions specified below. You can choose to put any content in the interactive places such as: images, audio, videos, links, documents, etc.

Step 3: Submit your content and form to the dropbox folder that will be emailed to you by Simulocity.

***Branding cannot be linked to content.**

****The images for the content spaces in the walls have to be the exact pixel size of the posters/TVs/banners within your booth number, in JPG/JPEG format. The linked content can be any size.**



Poster L1 (1600 x 1200 px)
Banner P1 (1150 x 3000 px)
Branding Banner P1 (1150 x 3000 px)



Poster P1 (1200 x 1600 px)
Poster P3 (1200 x 1600 px)



Poster P2 (1200 x 1600 px)
TVL1 (1920 x 1080 px)

Small-0047



Step 1: Select your virtual booth.

Step 2: Provide the desired content for each area following the dimensions specified below. You can choose to put any content in the interactive places such as: images, audio, videos, links, documents, etc.

Step 3: Submit your content and form to the dropbox folder that will be emailed to you by Simulocity.

***Branding cannot be linked to content.**
****The images for the content spaces in the walls have to be the exact pixel size of the posters/TVs/banners within your booth number, in JPG/JPEG format. The linked content can be any size.**

Branding Square 1 (1000 x 1000 px)
 Branding Square 2 (1000 x 1000 px)



TVL1 (1920 x 1080 px)



Banner P1 (1150 x 3000 px)



Poster P1 (1200 x 1600 px)
 Poster P2 (1200 x 1600 px)
 Poster P3 (1200 x 1600 px)
 Poster P4 (1200 x 1600 px)

Small-0048



Step 1: Select your virtual booth.

Step 2: Provide the desired content for each area following the dimensions specified below. You can choose to put any content in the interactive places such as: images, audio, videos, links, documents, etc.

Step 3: Submit your content and form to the dropbox folder that will be emailed to you by Simulocity.

***Branding cannot be linked to content.**
****The images for the content spaces in the walls have to be the exact pixel size of the posters/TVs/banners within your booth number, in JPG/JPEG format. The linked content can be any size.**



Poster P1 (1200 x 1600 px)
 TVL1 (1920 x 1080 px)



Poster L1 (1600 x 1200 px)
 Branding Poster P1 (1200 x 1600 px)
 Poster L2 (1600 x 1200 px)



Branding Poster L1 (1600 x 1200 p)
 Banner P1 (1150 x 3000 px)
 Banner P2 (1150 x 3000 px)